

# care solutions... what works and why

Doc M and  
Care Washrooms



*Armitage  
Shanks*

Armitage Shanks

After almost 200 years, the name of Armitage Shanks is synonymous with quality, safety and performance, where good design is backed by years of research and development. Now part of American Standard, our comprehensive and flexible range of washroom options is the preferred choice across the globe.

Access for all

In October 2004, Government introduced the latest revisions to the Disability Discrimination Act (DDA). Notably, Part M of the Building Regulations now requires that all businesses providing goods and services to the public must take reasonable steps to remove or alter physical features which make it difficult for disabled people to gain access and make use of the services or facilities.

It also states that before December 2006 sanitary facilities in commercial, public and some residential buildings must be adapted for use by people with physical, mental or sensory impairment (including wheelchair users). Failure to do so could result in litigation.

Design for life

Social responsibility aside, there are good business reasons for catering for disabled people. There are ten million disabled people living in the UK – all of whom are potential customers who can choose where to spend their money – an estimated £50 billion a year on goods and services.

If, as a business or service provider, you're positive and welcoming in your approach to people with disabilities, you will attract not only disabled customers but also their friends, family, carers and colleagues. Word will soon get around that you're positive about disability.

Compliance made easy

As the world's largest manufacturer of washroom facilities, Armitage Shanks believes it has a responsibility to set the standards for this new legislation and to help in its compliance. In compiling this guide, we have sought the views and suggestions of disabled people and consulted a number of representative organisations.

While this brochure is intended to provide information, guidance and practical advice about the new legislation, we would always recommend that you contact your local Buildings Regulations Department or consult a Planning Officer.

Contents

Information

- When? (02)
- Who? (04)
- What? (06)
- Where? (14)

Products

- Plus Pack (16)
- Contemporary Pack (18)
- Standard Pack (20)
- Standard Concealed Pack (22)
- Plus Pack with Standing Height Basin (24)
- Peninsular Pack (26)
- Ambulant Pack (28)
- Enlarged Cubicle (30)
- Doc M Shower Pack (32)
- Doc M Pack overview (34)
- Guarantee (36)



# your questions answered... the definitive guide to doc m requirements

## 02. when... 04. who... 06. what... 14. where...

**02. When does it apply?** The new legislation affects commercial, public and some domestic buildings including new builds, buildings undergoing extension, material alternation or major refurbishment and premises undergoing a change of use (see pages 02-03).

**04. Who does it apply to?** The new legislation ensures that all reasonable steps are taken to ensure that buildings are accessible and usable by all people, regardless of their ability, age or gender (see pages 04-05).

**06. What is required in a washroom facility?** The revised DDA requires that washrooms in commercial, public and some residential buildings should provide adequate facilities for people of all types and levels of disability including wheelchair users (see pages 06-13).

**14. Where do I locate the DOC M facilities?** The new facilities must be located in a reasonable accessible place. Where there are multiple floors, such as in a hotel, facilities should be sited in a similar location on all floors (see page 14).



# Q: when does it apply?

## A: whether your premises are to undergo major refurbishment or a change of use or you're undertaking a new build, all buildings must now be accessible and usable by people with a disability

Part M of the Building Regulations states that all buildings used by the general public, whether paid or for free, must provide access and facilities which can be used by all people regardless of ability, age or gender. In addition to the following types of organisations, it also includes new builds, buildings undergoing extension, material alternation or major refurbishment and premises undergoing a change of use.

- hotels, guest houses and hostels
- shops, pubs and restaurants
- estate agents and private landlords
- accommodation agents, councils and housing associations
- property developers, management agencies and investment companies
- institutions
- schools, colleges and universities
- banks and building societies
- mail order or telephone order businesses
- central and local government services
- courts and law firms
- employment agencies
- parks
- places of worship
- sport and leisure facilities
- bus and railway stations
- amenities and places of interest
- theatres and cinemas
- libraries and museums
- hospitals, doctors and dental surgeries
- telecommunications and broadcasting services

‘by october 2004 all suppliers of goods and services must remove all physical barriers where deemed reasonable’



Yousif Al-Wagga  
Manager, Apex Hotels Ltd

*'In the face of some complex changes, Armitage Shanks provided us with a range of very simple, pragmatic and effective solutions which has made our hotel much more accessible*

*and comfortable for those with disabilities'.*







**15% of the adult population have a disability**

**2 million people self define themselves as having a sight problem**

**Q: who does it apply to?**  
**A: people who are temporarily or permanently incapacitated whether through disability, people with babies or small children or those carrying heavy or large amounts of luggage**

Although it may vary in degree, diversity and distribution, disability is part of everyday life and will more than likely affect most people to a greater or lesser extent at some point in their lives. It's estimated that there are now around ten million people in the UK with a disability – all of whom are provided for through the DDA.

Part M of the revised Building Regulations, which addresses sanitary accommodation issues, now relates to a wider audience of people who are temporarily or permanently incapacitated, such as those with...

- physical or mobility impairment
- sensory impairment (hearing and visual)
- mental impairment or learning difficulties
- diminished tactile sensitivity
- babies or small children
- heavy luggage

It's now unlawful to discriminate against disabled people by:

- refusing to provide a service without justification
- providing a service to a lesser standard without justification
- providing a service on worse terms without justification
- failing to make reasonable adjustments to the way services are provided
- failing to make reasonable adjustments to the physical features of premises



**Q: what is required in a washroom facility?**  
**A: the revised disability discrimination act requires ‘that all suppliers of services, goods and facilities to the general public must remove all physical barriers where deemed reasonable’. so if you are offering or required to offer toilet facilities to your customers, clients or employees, you must make reasonable provision for everyone of all levels of ability including**

Contents

What is required in...  
Single Toilet Facilities  
and Washrooms

- Large Unisex Washroom (07)
- Standard Cubicle (07)
- Ambulant Disabled Cubicle (08)
- Enlarged Cubicle (08)
- Standard Unisex Wheelchair Accessible Washroom (09)
- Four Cubicle Combination (09)

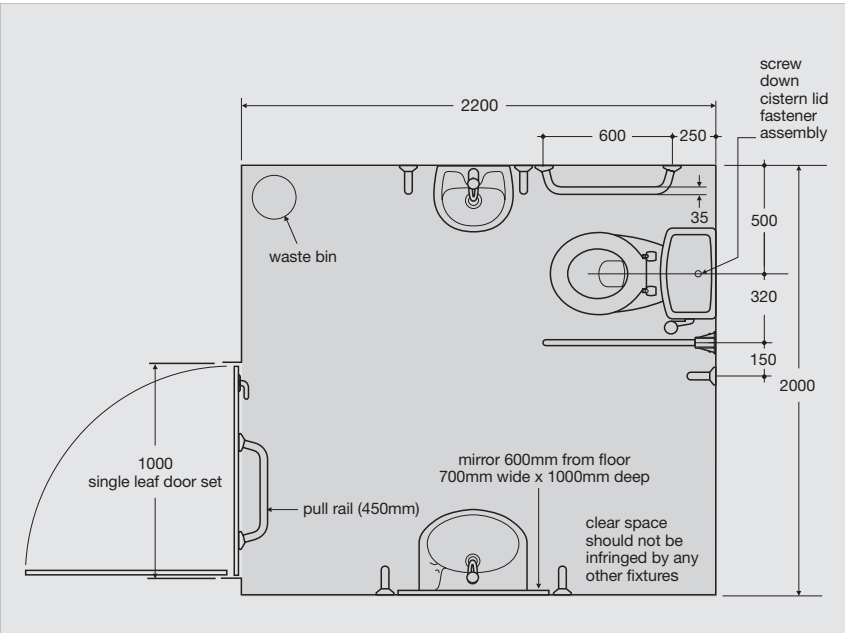
What is required in...  
Hotel, Public Shower  
and Residential Facilities

- Hotel Facilities, including Hotel Bathroom and Hotel Shower Room (10)
- Public Shower Facilities (11)
- Residential Bathroom Facilities (11)

single toilet facilities

where you only have one toilet facility this needs to be a large unisex wheelchair accessible washroom

large unisex washroom



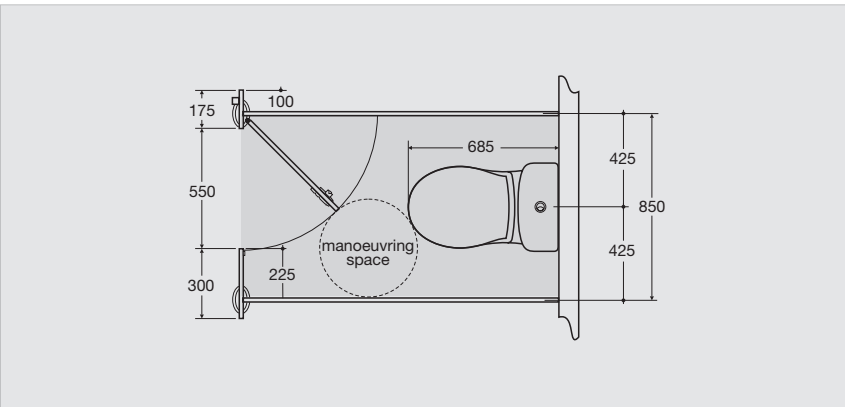
- Large Unisex Washroom**
- Room size 2200 x 2000mm.
  - Wall hung handrinse basin.
  - Additional standing height basin.
  - Raised height WC (must be 480mm high including seat with 750mm projection).
  - Door must open outwards.
  - Must be unisex – no longer acceptable to have solely within male or female washroom.
- Grab Rails**
- 2 x 600mm vertical grab rails above basin.
  - 2 x 600mm vertical grab rails by standing height basin.
  - Drop down grab rail by WC.
  - Vertical grab rail alongside WC.
  - 1 x 600mm horizontal grab rail on opposite side of WC.
  - 450mm horizontal grab rail on back of door.

washrooms

washrooms must offer different types of cubicle

- standard cubicles
- at least one ambulant cubicle per washroom
- for every four cubicles (including ambulant) you must have an enlarged cubicle

standard cubicle

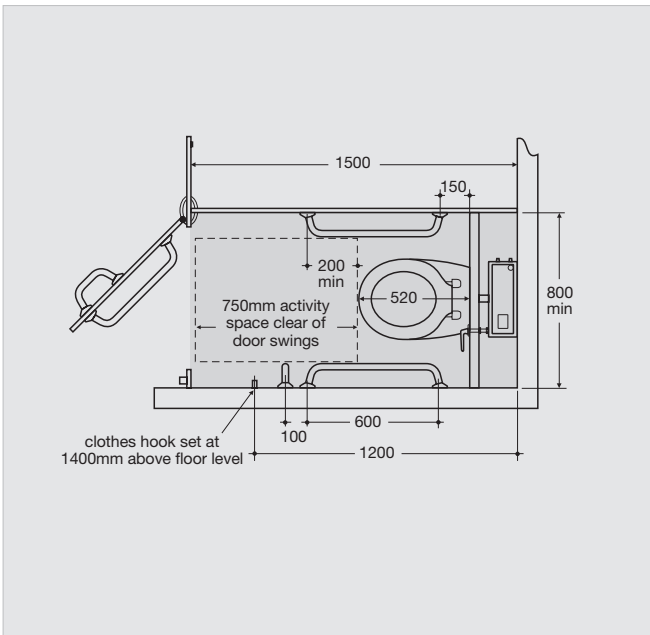


- Standard Cubicle**
- Must have 450mm diameter manoeuvring space.
  - Must be a minimum of 750mm wide.
  - Doors will ideally open outwards but can open inwards.
  - If doors open inwards, they must not infringe on activity space.
  - Inward opening doors must be able to be unlocked from the outside and lifted off their hinges.

# washrooms

washrooms must have at least one ambulant cubicle

## ambulant disabled cubicle

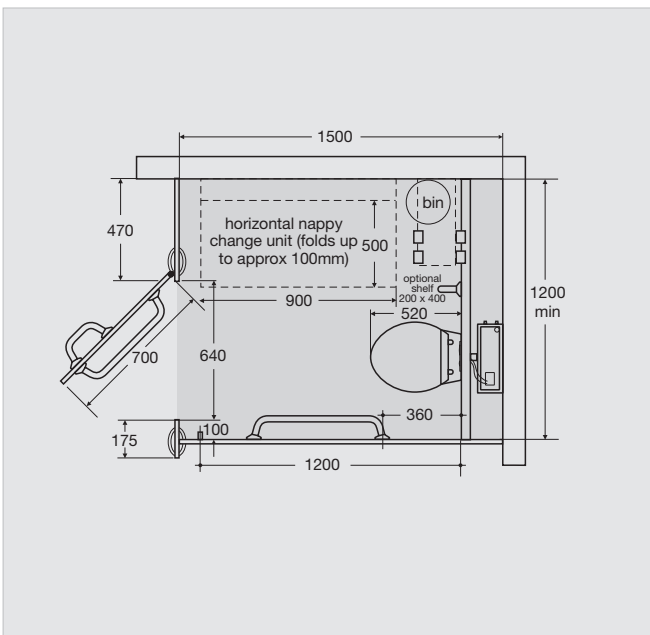


- Ambulant Disabled Cubicle**
- Must have a minimum of one per washroom.
  - Must be 800mm wide.
  - Must have two horizontal grab rails.
  - Optional vertical grab rail.
  - Door swing must have 750mm clearance from front edge of WC.
  - Door must be outward opening.
  - Raised height WC (must be 480mm high including seat).

- General Usage**
- Provides activity space for people who use crutches or have impaired leg movement.
  - Helps avoid unnecessary travel to unisex toilet.
  - Raised WC helps people who find it difficult to use a standard height WC.

for every four cubicles, including an ambulant, there must be an enlarged cubicle

## enlarged cubicle



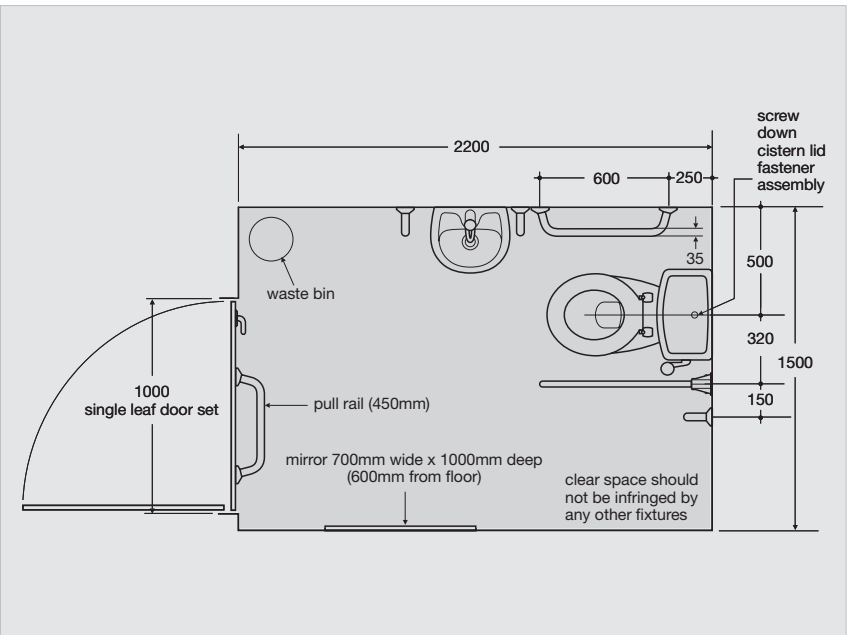
- Enlarged Cubicle**
- Must be 1200mm wide.
  - Must have one horizontal and one vertical grab rail set around WC.
  - Must have a horizontal closing bar on the door.
  - Must have a shelf.
  - Must have a folding baby table unless a separate facility is provided adjacent to the washroom.

- General Usage**
- Used by people who need extra space (eg. people with babies or small children, people carrying luggage and the ambulant disabled).

# washrooms

where you have a washroom with more than one toilet you will need a unisex

## standard unisex wheelchair accessible washroom

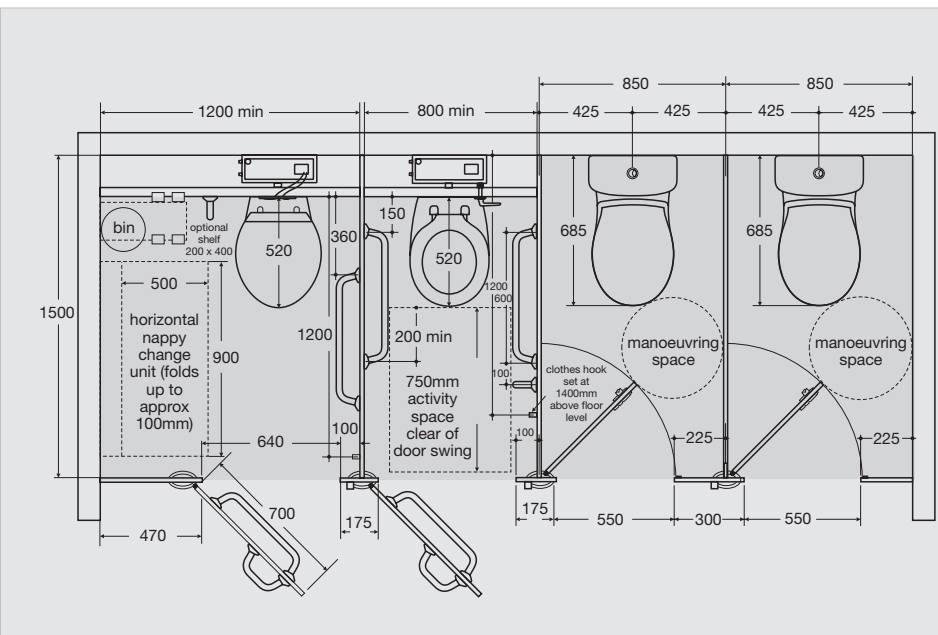


- Standard Unisex Wheelchair Accessible Washroom**
- Room size 2200 x 1500mm.
  - Door must open outwards.
  - Must be a unisex facility.
  - Must have wall hung basin.
  - Raised height WC (must be 480mm high including seat with 750mm projection).

- Grab Rails**
- 2 x 600mm vertical grab rails above basin.
  - Drop down grab rail by WC.
  - Vertical grab rail alongside WC.
  - 1 x 600mm horizontal grab rail on opposite side of WC.
  - 450mm horizontal rail on back of door.

layout shows an example of a four cubicle washroom

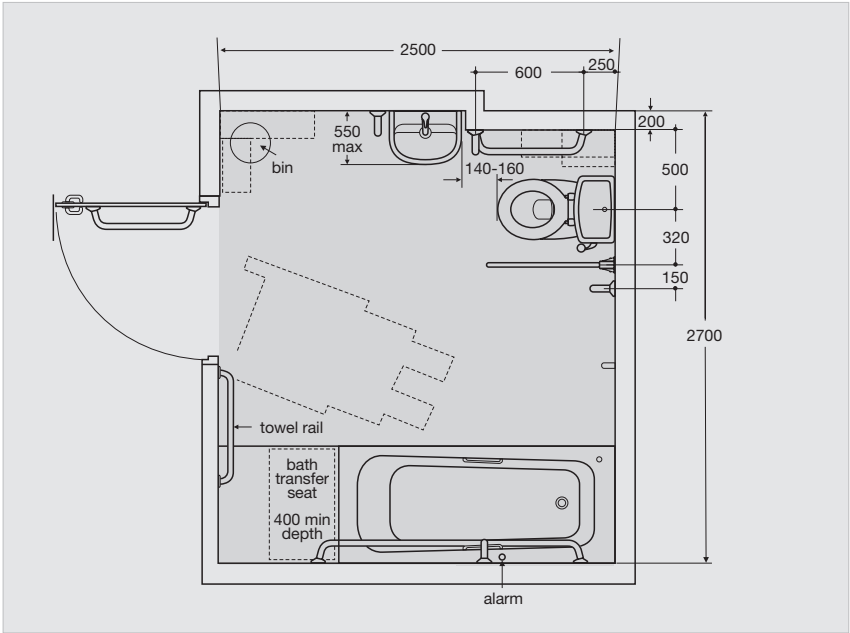
## four cubicle combination



- Four Cubicle Combination**
- Layout shows an example of a four cubicle washroom.
  - All washrooms must have one Ambulant cubicle.
  - For every four cubicles (including Ambulant) you must have an Enlarged cubicle.

# Q: what is required in a hotel\* facility?

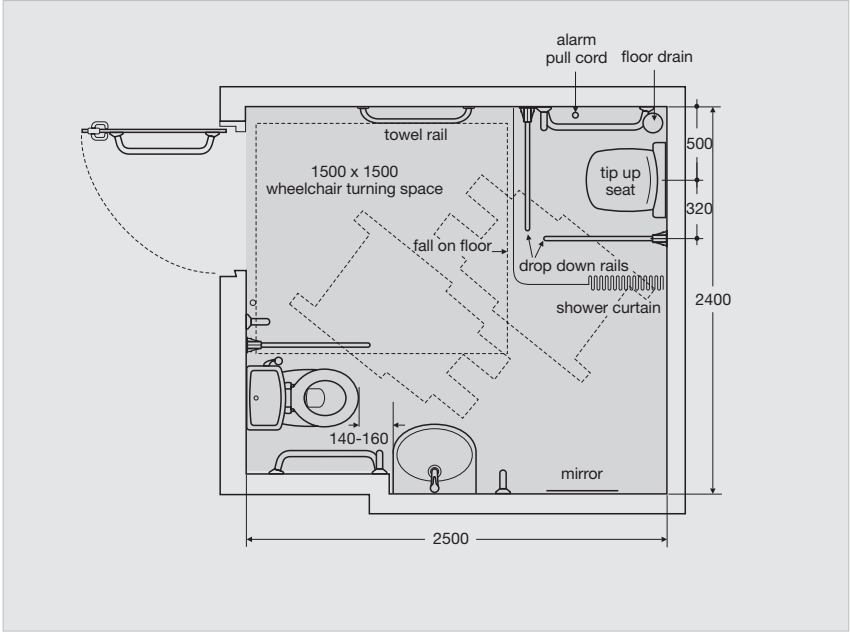
## hotel bathroom



- Hotel Bathroom**
- All users should be able to wash or bathe independently or with assistance from others.
  - A choice of bathroom layout, wherever possible will meet more needs. Layout should accommodate left and right hand transfer when there is more than one bathroom.
  - Floor must be slip resistant.
  - Bath needs a transfer seat 400mm deep and as wide as the bath.

bedrooms deemed wheelchair accessible should have a 50:50 ratio of baths and showers

## hotel shower room

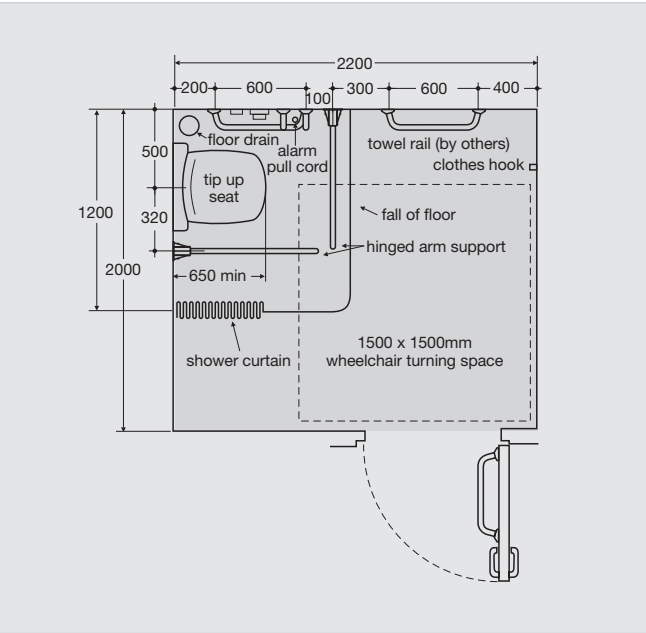


- Hotel Shower Room**
- Half the wheelchair accessible bedrooms should have shower facilities to offer an alternative from baths.
  - Floor must be slip resistant.
  - A shelf should be situated so it can be reached from the shower seat or wheelchair for toiletries.
  - Thermostatic shower with logical and clear markings.

# Q: what is required in public shower facilities?

if you are offering shower facilities at least one should be wheelchair accessible

## public shower facilities

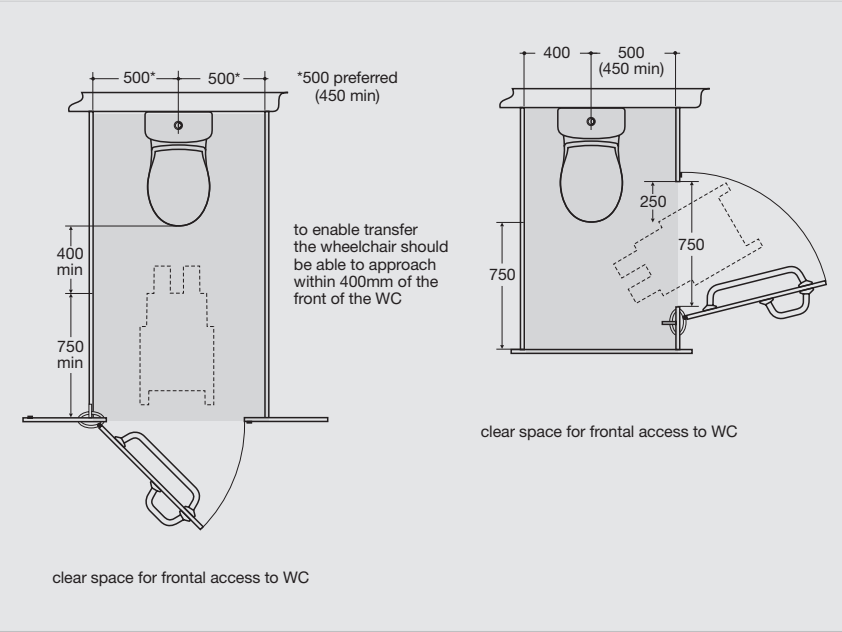


- Public Shower Facilities**  
eg. Sports Centres, Swimming Pools and Health and Leisure Centres
- At least one wheelchair accessible facility should be installed.
  - Layout must allow privacy and space for assisted care.
  - Controls should be positioned between 750 and 1000mm from the floor.
  - Facility must have slip-resistant flooring.
  - Thermostatic shower with logical and clear markings.

# Q: what is required in the home?

new houses must have a wc facility on the entry floor suitable for wheelchair access

## residential bathroom facilities



- Residential Bathroom Facilities**
- Must provide WC facility on entry floor of new buildings.
  - Doors must open outwards.
  - Entrance to property and WC facilities must allow for wheelchair access.
  - Must allow clear access to WC facilities.



## Q: how will doc m affect room design and layout?

### 1: surface finishes

- sanitary fittings (including grab rails) must contrast visually with background wall and floor finishes
- wall and floor coverings must contrast with one another
- the difference in light reflectance value between each surface should be greater than 20-30 points
- non-slip flooring should be used in all washroom facilities

### 2: taps

- must be capable of operation with a closed fist
- taps and valves must be thermostatically protected to a maximum of 43°C
- should be clearly marked to distinguish between hot and cold settings using touch as well as vision

### 3: cubicle doors

- must be capable of being opened with a closed fist using minimum force
- preferably all cubicle doors should open outwards
- inward opening doors should not encroach on minimum activity space
- inward opening doors must be able to be unlocked from the outside and lifted off their hinges

## colour contrast is required

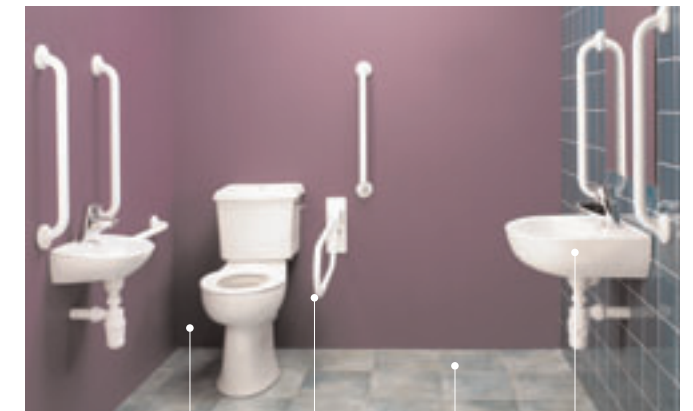
### colour contrast – luminance explained



**Colour contrast** Luminance refers to the light reflectance value (ie. contrast between surface colours). Each colour has a luminance point value.

The charts shown above illustrate the contrast between two groups of colours, each one being at least 20-30 points stronger in luminance than the next and therefore complying with new DDA guidelines. The colours must also visibly contrast with the washroom suite.

### surface finishes



colour contrast required between...

wall      grab rails      flooring      sanitary fittings

Each of the colours applied to the walls and non-slip flooring in every washroom facility must have at least a 20-30 point difference in light reflectance value, therefore contrasting with the sanitaryware and rails, helping those who have a visual impairment.

### taps



**Taps** All taps must be capable of being operated with a closed fist. Examples of tap designs which meet this requirement are lever action, push button and infrared operated mechanism.

### cubicle doors

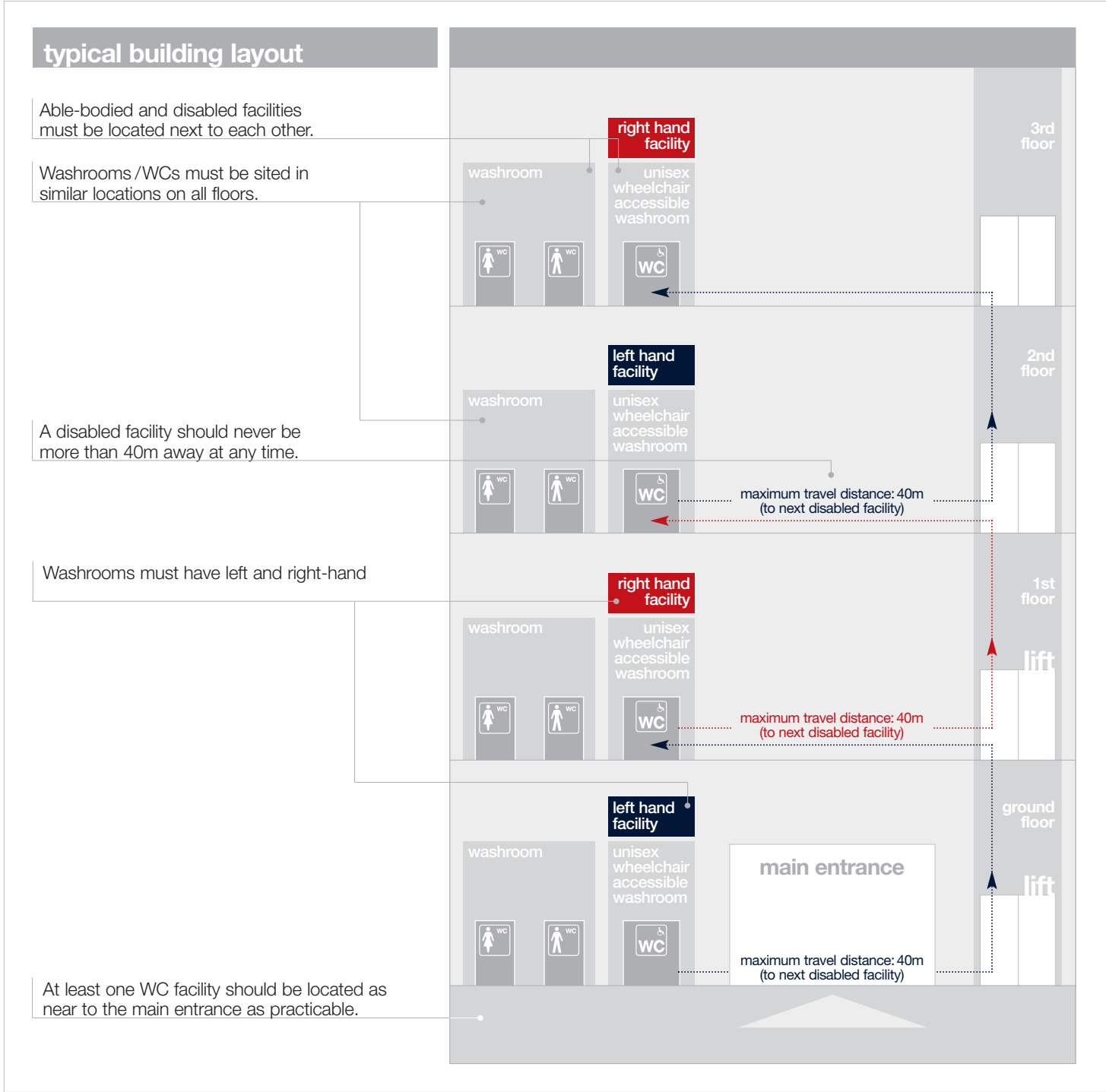


**Cubicle Doors** Ideally, cubicle doors should be outward opening and capable of being opened with a closed fist. They should also be able to be opened from the outside and lifted off their hinges.



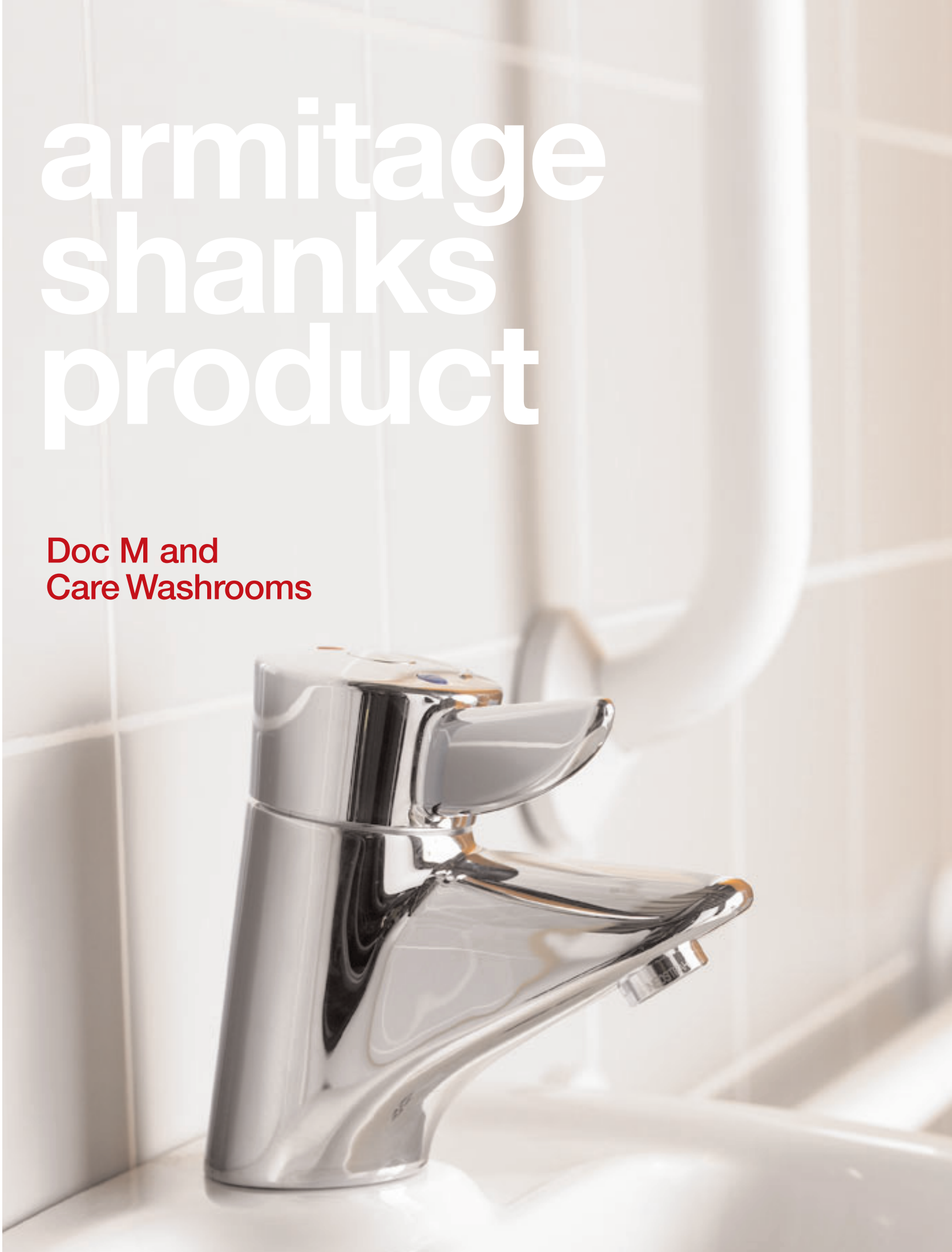
**Q: where do I locate the new facilities?**

**A: washroom facilities should be located as near to the main entrance as is practicable and next to any able-bodied facilities**



armitage  
shanks  
product

Doc M and  
Care Washrooms





plus pack  
good design and  
practical elements  
come together  
in this stylish yet  
easy to use model

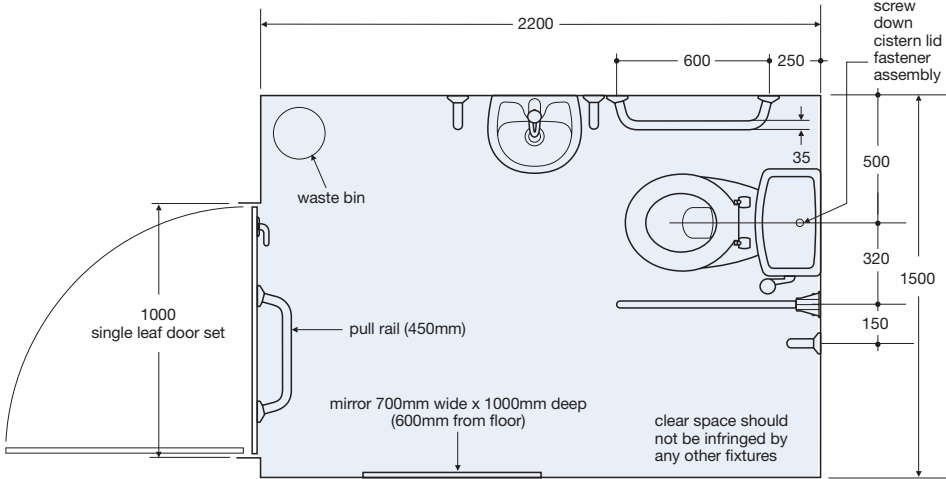
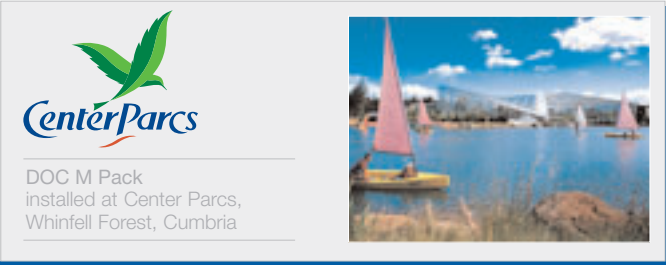
SPECIFICATIONS: PLUS PACK

- Wall basin without overflow for additional hygiene.
- Thermostatic Sequential Mixer. TMV3 approved to prevent scalding. Thermostat is within mixer (not separate as with other suppliers). This cuts down risk of legionella bacteria forming between separate thermostat and mixer. Easy operation handle.
- High-rise WC set at 480mm for wheelchair height access.
- Cistern lid is screwed down to cistern for improved safety.
- Spatula lever on cistern for easy flushing with hand or elbow.
- Toilet-roll holder.
- Concealed fixing grab rails tested to 33 stone weight.
- Drop-down grab rail tested to 30 stone weight.
- Available with white or blue rails and seat.
- LANTAC approved.

Spatula handle



PRODUCT CODES	
plus pack	
<input type="checkbox"/> White with white rails and seat	S687101
<input checked="" type="checkbox"/> White with blue rails and seat	S687201



For complete technical information please log on to [www.thebluebook.co.uk](http://www.thebluebook.co.uk) or call 0870 122 8822





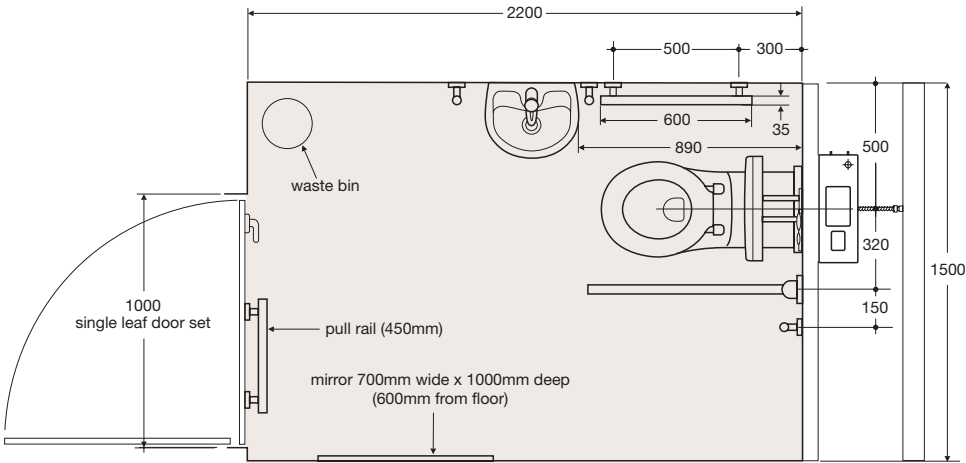
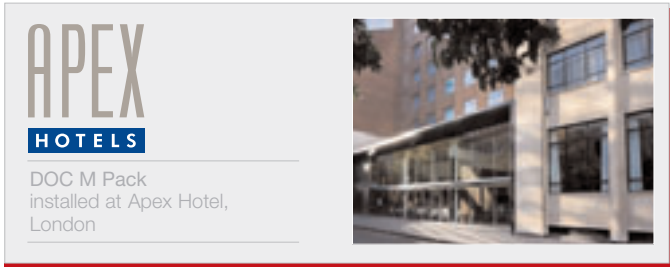
# contemporary pack

with its clean lines and contemporary styling, this pack combines practical features with smart looks

PRODUCT CODES	
contemporary pack	
White with stainless steel rails	S692701
White with satin finish rails	S6927AY

## SPECIFICATIONS: CONTEMPORARY PACK

- Modern contemporary design.
- Wall basin without overflow for additional hygiene.
- Thermostatic Sequential Mixer. TMV3 approved to prevent scalding. Thermostat is within mixer (not separate as with other suppliers). This cuts down risk of legionella bacteria forming between separate thermostat and mixer. Easy operation handle.
- Wall-mounted WC designed for easy wheelchair access.
- Luxury back support.
- Push button flushing control.
- Toilet-roll holder.
- Stylish brass concealed fixing grab rails finished in chrome or satin.
- Lightweight luxury aluminium drop-down grab rail.
- Available with stainless steel rails.
- LANTAC approved.



For complete technical information please log on to [www.thebluebook.co.uk](http://www.thebluebook.co.uk) or call 0870 122 8822



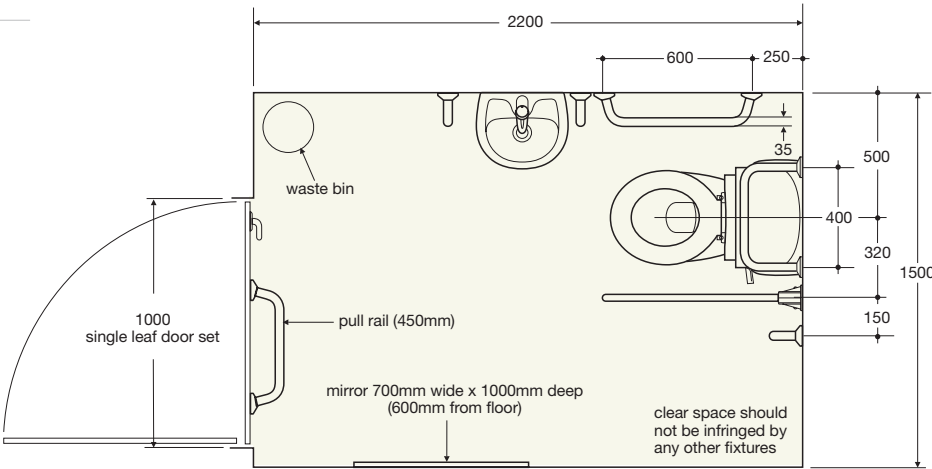
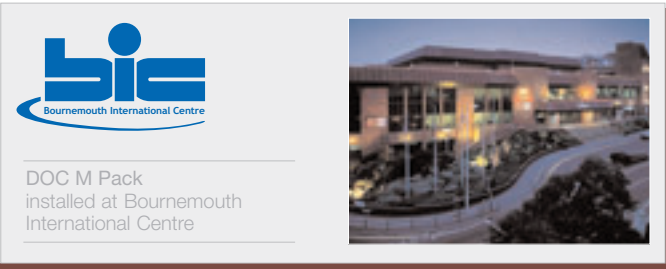


# **standard pack** for no-nonsense practicality and simple solid design, the standard pack offers everything you need in a washroom facility

PRODUCT CODES	
standard pack	
<input type="checkbox"/> White with white rails and seat	S687501
<input checked="" type="checkbox"/> White with blue rails and seat	S6875LI

## SPECIFICATIONS: STANDARD PACK

- Wall basin without overflow for additional hygiene.
- Thermostatic Sequential Mixer. TMV3 approved to prevent scalding. Thermostat is within mixer (not separate as with other suppliers). This cuts down risk of legionella bacteria forming between separate thermostat and mixer. Easy operation handle.
- High rise WC set at 480mm for wheelchair height access.
- WC back support cushion for improved comfort.
- Spacer box provide correct WC projection for wheelchair access.
- Concealed fixing grab rails tested to 33 stone weight.
- Drop down grab rail tested to 30 stone weight.
- Available with white or blue rails and seat.
- LANTAC approved.



For complete technical information please log on to [www.thebluebook.co.uk](http://www.thebluebook.co.uk) or call 0870 122 8822



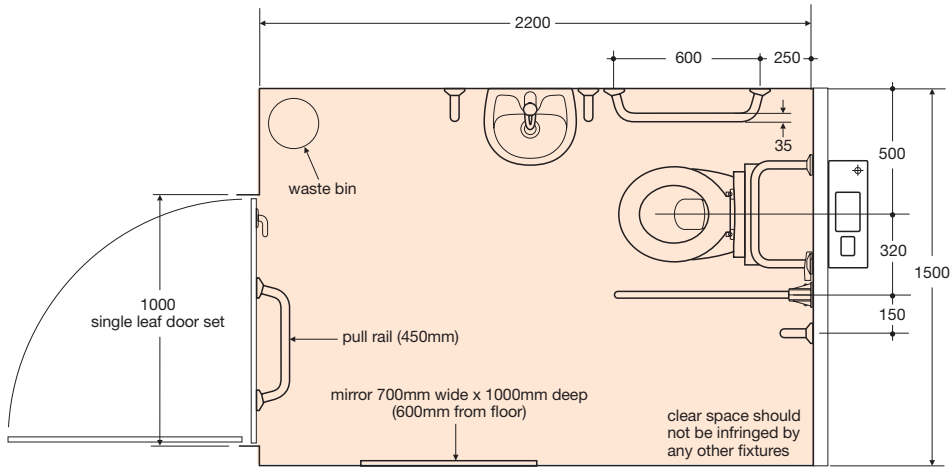
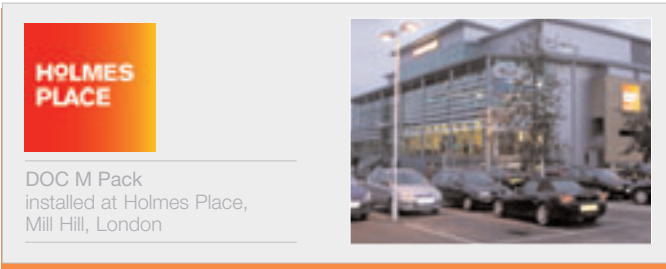
# standard concealed pack

## effortless design and functionality make this range of concealed installation and flush systems

### SPECIFICATIONS: STANDARD CONCEALED PACK

- Wall basin without overflow for additional hygiene.
- Thermostatic Sequential Mixer. TMV3 approved to prevent scalding. Thermostat is within mixer (not separate as with other suppliers). This cuts down risk of legionella bacteria forming between separate thermostat and mixer. Easy operation handle.
- High-rise WC set at 480mm for wheelchair height access.
- Concealed cistern provides hygiene and access benefits.
- WC back support cushion for improved comfort.
- Spacer box provides correct WC projection for wheelchair access.
- Toilet-roll holder.
- Concealed fixing grab rails tested to 33 stone weight.
- Drop-down grab rail tested to 30 stone weight.
- Available with white or blue rails and seat.
- LANTAC approved.

PRODUCT CODES	
standard concealed pack	
<input type="checkbox"/> White with white rails and seat	S687801
<input checked="" type="checkbox"/> White with blue rails and seat	S687901



For complete technical information please log on to [www.thebluebook.co.uk](http://www.thebluebook.co.uk) or call 0870 122 8822





plus pack  
with standing height basin  
this pack with  
additional basin  
is exactly what  
you need when  
you only have  
one toilet facility

SPECIFICATIONS: PLUS PACK WITH STANDING HEIGHT BASIN

- 370mm wall basin without overflow for additional hygiene.
- 500mm Portman basin set at standing height.
- Thermostatic Sequential Mixer. TMV3 approved to prevent scalding. Thermostat is within mixer (not separate as with other suppliers). This cuts down risk of legionella bacteria forming between separate thermostat and mixer. Easy operation handle.
- High-rise WC set at 480mm for wheelchair height access.
- Cistern lid is screwed down to cistern for improved safety.
- Spatula lever on cistern for easy flushing with hand or elbow.
- Toilet-roll holder.
- Concealed fixing grab rails tested to 33 stone weight.
- Drop-down grab rail tested to 30 stone weight.
- Available with white or blue rails and seat.
- LANTAC approved.

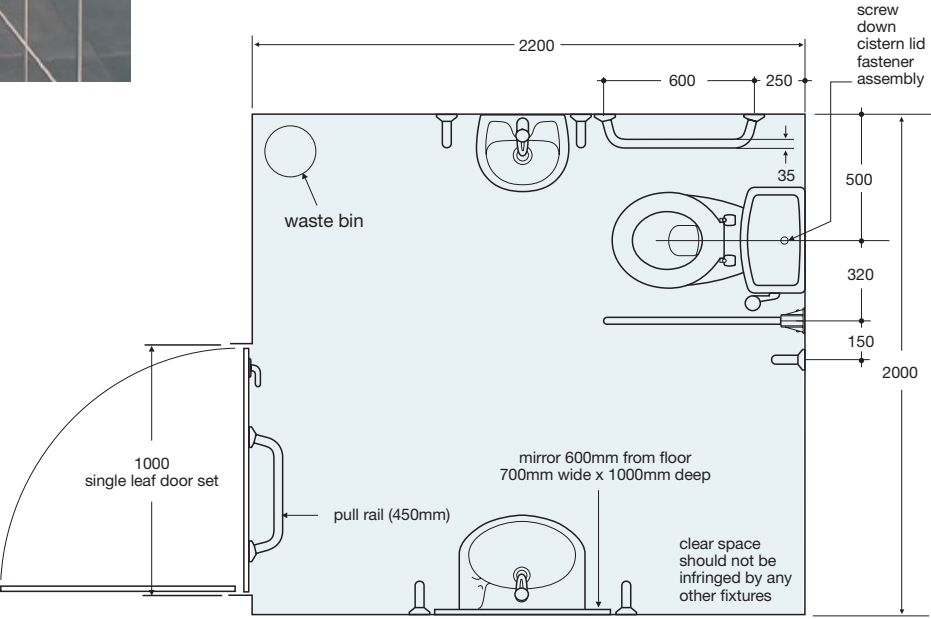
Opera House  
**CASINO**

DOC M Pack  
installed at  
Scarborough Casino

PRODUCT CODES			
plus pack with standing height basin			
<input type="checkbox"/> Plus pack with white rails and seat	S687101	<input checked="" type="checkbox"/> Plus pack with blue rails and seat	S687201
Portman 500mm basin with 1 tap hole, overflow, no chainstay hole	S223101	Portman 500mm basin with 1 tap hole, overflow, no chainstay hole	S223101
Aluminium support bracket	S915067	Aluminium support bracket	S915067
Nuastyle Thermostatic Basin Mixer	S7449AA	Nuastyle Thermostatic Basin Mixer	S7449AA
1 1/4" swivel plug waste with slotted tail	S8733AA	1 1/4" swivel plug waste with slotted tail	S8733AA
1 1/4" white plastic bottle trap	S891067	1 1/4" white plastic bottle trap	S891067
2 x 600mm white grab rails	S6730AC	2 x 600mm blue grab rails	S6730LI



Spatula handle



For complete technical information please log on to [www.thebluebook.co.uk](http://www.thebluebook.co.uk) or call 0870 122 8822






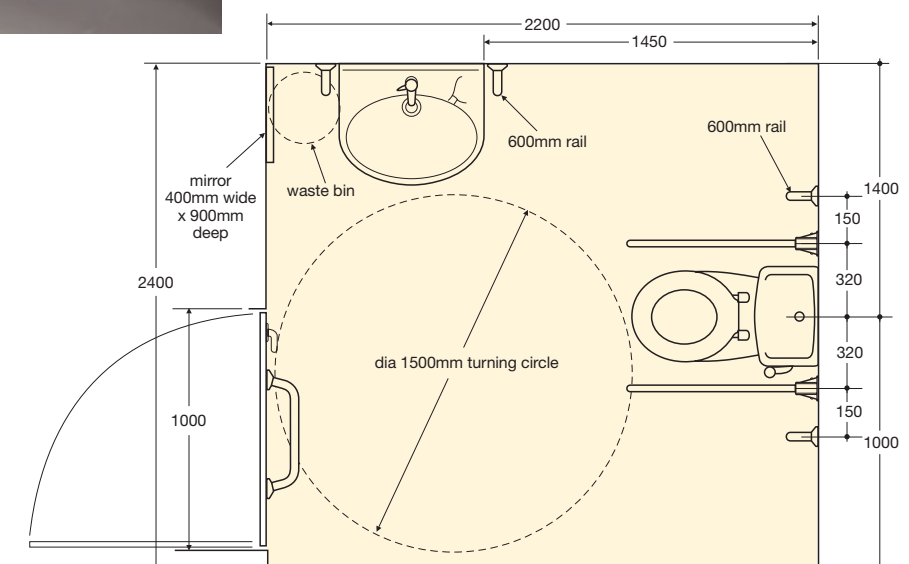
Please note, the Peninsular care pack requires local authority approval to be used in a public place.

**peninsular pack**  
combining understated  
design with ergonomic  
handling, the peninsular  
pack is designed for the  
ultimate in convenience

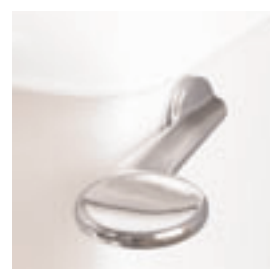
## SPECIFICATIONS: PENINSULAR PACK

- Large basin.
- Thermostatic Sequential Mixer. TMV3 Approved to prevent scalding. Thermostat is within mixer (not separate as with other suppliers). This cuts down risk of legionella bacteria forming between separate thermostat and mixer. Easy operation handle.
- High rise WC set at 480mm for wheelchair height access.
- Cistern lid is screwed down to cistern for improved safety.
- Spatula lever on cistern for easy flushing with hand or elbow.
- Designed for use by right and left-handed wheelchair users.
- Concealed fixing grab rails tested to 33 stone weight.
- Drop-down grab rail tested to 30 stone weight.
- Available with blue rails and seat.

PRODUCT CODES	
<b>peninsular pack</b>	
 White with blue rails and seat	S687301



For complete technical information please log on to [www.thebluebook.co.uk](http://www.thebluebook.co.uk) or call 0870 122 8822

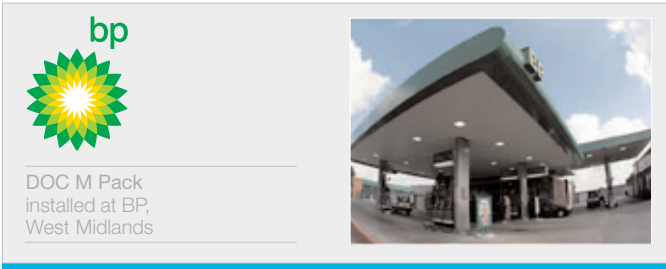


# ambulant pack stylish, streamlined and practical, the ambulant pack offers accessible facilities with minimal fuss

PRODUCT CODES	
ambulant pack with concealed cistern	
<input type="checkbox"/> White with white rails and seat	S686401
<input checked="" type="checkbox"/> White with blue rails and seat	S6864LI
ambulant pack with close coupled wc	
<input type="checkbox"/> White with white rails and seat	S686501
<input checked="" type="checkbox"/> White with blue rails and seat	S6865LI

## SPECIFICATIONS: AMBULANT PACK

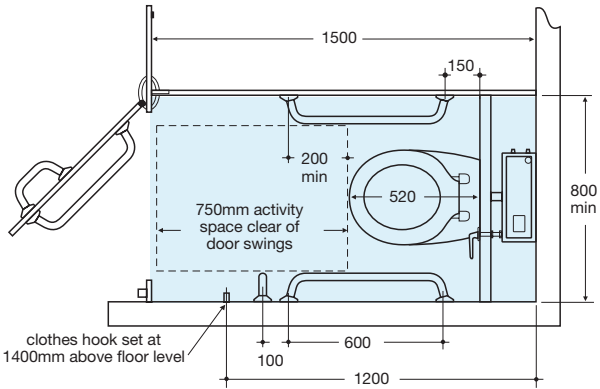
- For use by ambulant disabled, mobility impaired and the infirm.
- High-rise WC set at 480mm for easier access.
- Concealed cistern provides hygiene and access benefits.
- Concealed fixing grab rails tested to 33 stone weight.
- Available with white or blue rails and seat.



## CLOSE COUPLED WC OPTION

- High-rise close coupled WC set at 480mm for wheelchair height access.

High-rise close coupled WC



For complete technical information please log on to [www.thebluebook.co.uk](http://www.thebluebook.co.uk) or call 0870 122 8822







enlarged cubicle  
flexibility combined  
with practicality  
for those who  
require more  
room than others

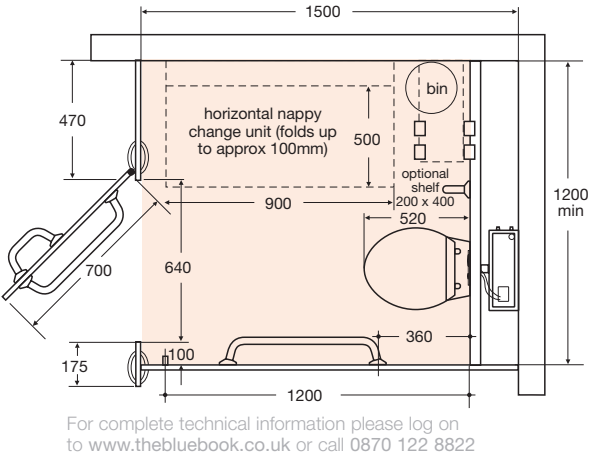
SPECIFICATIONS: ENLARGED CUBICLE

- Designed for those who need extra space – ambulant disabled, mobility impaired, people with babies or small children and those carrying luggage.
- Contour rimless WC for easy cleaning and increased hygiene.
- Concealed cistern with dual flush push button. Plate can be removed for access to cistern.
- Concealed fixing grab rails tested to 33 stone weight.

PRODUCT CODES			
enlarged cubicle			
<input type="checkbox"/> With white rails and seat		<input checked="" type="checkbox"/> With blue rails and seat	
Contour WC rimless pan with horizontal outlet	S342001	Contour WC rimless pan with horizontal outlet	S342001
Conceala 2 cistern, 6 litre, with dual pneumatic flush	S362467	Conceala 2 cistern, 6 litre, with dual pneumatic flush	S362467
Armitage Shanks Contemporary flush plate in chrome	S4397AA	Armitage Shanks Contemporary flush plate in chrome	S4397AA
Bakasan seat, no cover, chrome hinges	S406301	Bakasan seat, no cover, chrome hinges	S406336
1 x 450mm white grab rail	S6765AC	1 x 450mm blue grab rail	S6765LI
White clothes hook	S5093AC	Blue clothes hook	S5093LI
2 x 600mm white grab rails	S6730AC	2 x 600mm blue grab rails	S6730LI

MANCHESTER  
**ARNDALE**

DOC M Pack  
installed at the Arndale Centre,  
Manchester



For complete technical information please log on to [www.thebluebook.co.uk](http://www.thebluebook.co.uk) or call 0870 122 8822





doc m shower pack  
with its thermostatic  
shower and option of  
fixed or movable shower  
head, this design sets the  
standard for practical and  
flexible shower rooms

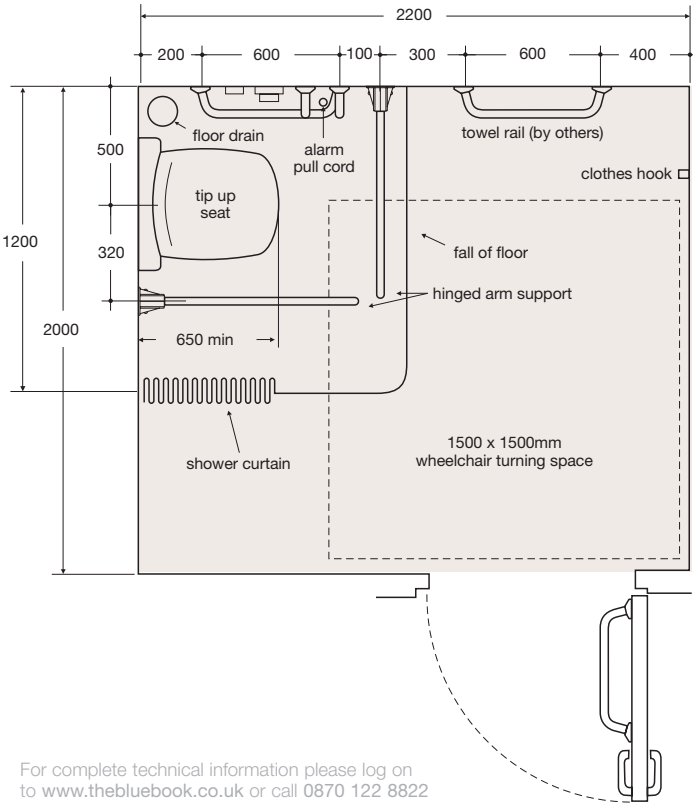
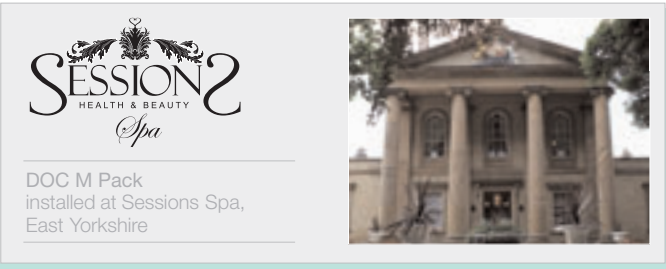
PRODUCT CODES	
doc m shower pack	
<input type="checkbox"/> Shower pack with white rails and seat	S6863AA
<input checked="" type="checkbox"/> Shower pack with blue rails and seat	S6863LI

SPECIFICATIONS: DOC M SHOWER PACK

- Accessible shower and changing area for wheelchair and care assisted use.
- Easily adjusted diverter for fixed or moveable shower head.
- Friction hand set for easy up and down movement on rail.
- Lever operated thermostatic valve (TMV3 approved) to deliver safe, stable hot water at a set temperature.
- Hinged seat and back support.
- Concealed fixing grab rails tested to 33 stone weight.
- Drop-down grab rail tested to 30 stone weight.

OPTION

- Also available with corner WC and basin, see Blue Book for further details.








For complete technical information please log on to [www.thebluebook.co.uk](http://www.thebluebook.co.uk) or call 0870 122 8822



# doc m pack overview

## an easy-to-use guide to highlight the content, features and usage of each individual pack in the armitage shanks doc m range

	PACK	CODES	SPECIFICATION				
	<p><b>plus pack</b> good design and practical elements come together in this stylish yet easy to use model</p> <p>page: 16</p>	<table><tr><td><input type="checkbox"/> White with white rails and seat</td><td>S687101</td></tr><tr><td><input checked="" type="checkbox"/> White with blue rails and seat</td><td>S687201</td></tr></table>	<input type="checkbox"/> White with white rails and seat	S687101	<input checked="" type="checkbox"/> White with blue rails and seat	S687201	<ul style="list-style-type: none"><li>– Wall basin without overflow for additional hygiene.</li><li>– Thermostatic Sequential Mixer. TMV3 approved to prevent scalding. Thermostat is within mixer (not separate as with other suppliers). This cuts down risk of legionella bacteria forming between separate thermostat and mixer. Easy operation handle.</li><li>– High-rise WC set at 480mm for wheelchair height access.</li><li>– Cistern lid is screwed down to cistern for improved safety.</li><li>– Spatula lever on cistern for easy flushing with hand or elbow.</li><li>– Toilet-roll holder.</li><li>– Concealed fixing grab rails tested to 33 stone weight.</li><li>– Drop-down grab rail tested to 30 stone weight.</li><li>– Available with white or blue rails and seat.</li><li>– LANTAC approved.</li></ul>
<input type="checkbox"/> White with white rails and seat	S687101						
<input checked="" type="checkbox"/> White with blue rails and seat	S687201						
	<p><b>contemporary pack</b> with its clean lines and contemporary styling, this pack combines practical features with smart looks</p> <p>page: 18</p>	<table><tr><td><input type="checkbox"/> White with stainless steel rails</td><td>S692701</td></tr><tr><td><input type="checkbox"/> White with satin finish rails</td><td>S6927AY</td></tr></table>	<input type="checkbox"/> White with stainless steel rails	S692701	<input type="checkbox"/> White with satin finish rails	S6927AY	<ul style="list-style-type: none"><li>– Modern contemporary design.</li><li>– Wall basin without overflow for additional hygiene.</li><li>– Thermostatic Sequential Mixer. TMV3 approved to prevent scalding. Thermostat is within mixer (not separate as with other suppliers). This cuts down risk of legionella bacteria forming between separate thermostat and mixer. Easy operation handle.</li><li>– Wall-mounted WC designed for easy wheelchair access.</li><li>– Luxury back support.</li><li>– Push button flushing control.</li><li>– Toilet-roll holder.</li><li>– Stylish brass concealed fixing grab rails finished in chrome or satin.</li><li>– Lightweight luxury aluminium drop-down grab rail.</li><li>– Available with stainless steel rails.</li><li>– LANTAC approved.</li></ul>
<input type="checkbox"/> White with stainless steel rails	S692701						
<input type="checkbox"/> White with satin finish rails	S6927AY						
	<p><b>standard pack</b> for no-nonsense practicality and simple solid design, the standard pack offers everything you need in a washroom facility</p> <p>page: 20</p>	<table><tr><td><input type="checkbox"/> White with white rails and seat</td><td>S687501</td></tr><tr><td><input checked="" type="checkbox"/> White with blue rails and seat</td><td>S6875LI</td></tr></table>	<input type="checkbox"/> White with white rails and seat	S687501	<input checked="" type="checkbox"/> White with blue rails and seat	S6875LI	<ul style="list-style-type: none"><li>– Wall basin without overflow for additional hygiene.</li><li>– Thermostatic Sequential Mixer. TMV3 approved to prevent scalding. Thermostat is within mixer (not separate as with other suppliers). This cuts down risk of legionella bacteria forming between separate thermostat and mixer. Easy operation handle.</li><li>– High rise WC set at 480mm for wheelchair height access.</li><li>– WC back support cushion for improved comfort.</li><li>– Spacer box provide correct WC projection for wheelchair access.</li><li>– Concealed fixing grab rails tested to 33 stone weight.</li><li>– Drop down grab rail tested to 30 stone weight.</li><li>– Available with white or blue rails and seat.</li><li>– LANTAC approved.</li></ul>
<input type="checkbox"/> White with white rails and seat	S687501						
<input checked="" type="checkbox"/> White with blue rails and seat	S6875LI						
	<p><b>standard concealed pack</b> effortless design and functionality make this range of concealed installation and flush systems</p> <p>page: 22</p>	<table><tr><td><input type="checkbox"/> White with white rails and seat</td><td>S687801</td></tr><tr><td><input checked="" type="checkbox"/> White with blue rails and seat</td><td>S687901</td></tr></table>	<input type="checkbox"/> White with white rails and seat	S687801	<input checked="" type="checkbox"/> White with blue rails and seat	S687901	<ul style="list-style-type: none"><li>– Wall basin without overflow for additional hygiene.</li><li>– Thermostatic Sequential Mixer. TMV3 approved to prevent scalding. Thermostat is within mixer (not separate as with other suppliers). This cuts down risk of legionella bacteria forming between separate thermostat and mixer. Easy operation handle.</li><li>– High-rise WC set at 480mm for wheelchair height access.</li><li>– Concealed cistern provides hygiene and access benefits.</li><li>– WC back support cushion for improved comfort.</li><li>– Spacer box provides correct WC projection for wheelchair access.</li><li>– Toilet-roll holder.</li><li>– Concealed fixing grab rails tested to 33 stone weight.</li><li>– Drop-down grab rail tested to 30 stone weight.</li><li>– Available with white or blue rails and seat.</li><li>– LANTAC approved.</li></ul>
<input type="checkbox"/> White with white rails and seat	S687801						
<input checked="" type="checkbox"/> White with blue rails and seat	S687901						

PACK	CODES		SPECIFICATION
 <p><b>plus pack</b> with standing height basin this pack with additional basin is exactly what you need when you only have one toilet facility</p> <p>page: 24</p>	<div>See pages 24-25 for individual product codes</div>		<ul style="list-style-type: none"><li>- 370mm wall basin without overflow for additional hygiene.</li><li>- 500mm Portman basin set at standing height.</li><li>- Thermostatic Sequential Mixer. TMV3 approved to prevent scalding. Thermostat is within mixer (not separate as with other suppliers). This cuts down risk of legionella bacteria forming between separate thermostat and mixer. Easy operation handle.</li><li>- High-rise WC set at 480mm for wheelchair height access.</li><li>- Cistern lid is screwed down to cistern for improved safety.</li><li>- Spatula lever on cistern for easy flushing with hand or elbow.</li><li>- Toilet-roll holder.</li><li>- Concealed fixing grab rails tested to 33 stone weight.</li><li>- Drop-down grab rail tested to 30 stone weight.</li><li>- Available with white or blue rails and seat.</li><li>- LANTAC approved.</li></ul>
 <p><b>peninsular pack</b> combining understated design with ergonomic handling, the peninsular pack is designed for the ultimate in convenience</p> <p>page: 26</p>	<div><div><input checked="" type="checkbox"/> White with blue rails and seat</div><div>S687301</div></div>		<ul style="list-style-type: none"><li>- Large basin.</li><li>- Thermostatic Sequential Mixer. TMV3 Approved to prevent scalding. Thermostat is within mixer (not separate as with other suppliers). This cuts down risk of legionella bacteria forming between separate thermostat and mixer. Easy operation handle.</li><li>- High rise WC set at 480mm for wheelchair height access.</li><li>- Cistern lid is screwed down to cistern for improved safety.</li><li>- Spatula lever on cistern for easy flushing with hand or elbow.</li><li>- Designed for use by right and left-handed wheelchair users.</li><li>- Concealed fixing grab rails tested to 33 stone weight.</li><li>- Drop-down grab rail tested to 30 stone weight.</li><li>- Available with blue rails and seat.</li></ul>
 <p><b>ambulant pack</b> stylish, streamlined and practical, the ambulant pack offers accessible facilities with minimal fuss</p> <p>page: 28</p>	<div>WITH CONCEALED WC</div> <div><div><input type="checkbox"/> White with white rails and seat</div><div>S686401</div></div> <div><div><input checked="" type="checkbox"/> White with blue rails and seat</div><div>S6864LI</div></div> <div>WITH CLOSE COUPLED WC</div> <div><div><input type="checkbox"/> White with white rails and seat</div><div>S686501</div></div> <div><div><input checked="" type="checkbox"/> White with blue rails and seat</div><div>S6865LI</div></div>		<ul style="list-style-type: none"><li>- For use by ambulant disabled, mobility impaired and the infirm.</li><li>- High-rise WC set at 480mm for easier access.</li><li>- Concealed cistern provides hygiene and access benefits.</li><li>- Concealed fixing grab rails tested to 33 stone weight.</li><li>- Available with white or blue rails and seat.</li></ul> <div>CLOSE COUPLED WC OPTION</div> <ul style="list-style-type: none"><li>- High-rise close coupled WC set at 480mm for wheelchair height access.</li></ul>
 <p><b>enlarged cubicle</b> flexibility combined with practicality for those who require more room than others</p> <p>page: 30</p>	<div>See pages 30-31 for individual product codes</div>		<ul style="list-style-type: none"><li>- Designed for those who need extra space – ambulant disabled, mobility impaired, people with babies or small children and those carrying luggage.</li><li>- Contour rimless WC for easy cleaning and increased hygiene.</li><li>- Concealed cistern with dual flush push button. Plate can be removed for access to cistern.</li><li>- Concealed fixing grab rails tested to 33 stone weight.</li></ul>
 <p><b>doc m shower pack</b> with its thermostatic shower and option of fixed or movable shower head, this design sets the standard for practical and flexible shower rooms</p> <p>page: 32</p>	<div><div><input type="checkbox"/> White with white rails and seat</div><div>S6863AA</div></div> <div><div><input checked="" type="checkbox"/> White with blue rails and seat</div><div>S6863LI</div></div>		<ul style="list-style-type: none"><li>- Accessible shower and changing area for wheelchair and care assisted use.</li><li>- Easily adjusted diverter for fixed or moveable shower head.</li><li>- Friction hand set for easy up and down movement on rail.</li><li>- Lever operated thermostatic valve (TMV3 approved) to deliver safe, stable hot water at a set temperature.</li><li>- Hinged seat and back support.</li><li>- Concealed fixing grab rails tested to 33 stone weight.</li><li>- Drop-down grab rail tested to 30 stone weight.</li></ul> <div>OPTION</div> <ul style="list-style-type: none"><li>- Also available with corner WC and basin, see Blue Book for further details.</li></ul>

# guarantee

lifetime  
all ceramic products

5 years  
on taps and mixers, toilet seats  
and cistern fittings

Our confidence in the quality and reliability of our product allows us to offer outstanding extended guarantees on all our products – where the product fails within 5/25 years/lifetime we offer a free replacement or replacement part (or nearest equivalent). So when your washroom has been satisfactorily installed and is working well, please ensure you register your guarantee.

This guarantee is transferable – it applies to the product not the purchaser provided the guarantee registration is passed on to the new owner.

Liability is limited to individual products and the guarantee does not cover the consequential loss or damage or installation costs. This guarantee does not affect your statutory rights. Products must be installed, used and cared for in line with our fixing instructions and local water regulations, and room must be adequately ventilated.

Parts (eg. flushvalves) are guaranteed for five years and will be replaced if found to be faulty. The guarantee does not cover general wear and tear.

Applies to UK and Republic of Ireland only.

You can register for guarantees on a bathroom bought on your behalf by a plumber or builder.

Colours printed in this book are as near as possible to the manufactured range of Armitage Shanks quality bathrooms. For accurate comparisons of colours, see actual ware on display at Armitage Shanks retailers. Our policy is one of continuous improvement and we reserve the right to change specification and design at any time without notice.

All measurements are in millimetres and are approximate. Products can be subject to tolerances due to manufacturing processes.

If you would like to receive a copy of our informative 'Blue Book' please call 0870 122 8822 [www.thebluebook.co.uk](http://www.thebluebook.co.uk)

A division of Ideal Standard (UK) Ltd.

© Armitage Shanks  
P995 05/06



**Additional Resources**  
Further information about the Disability Discrimination Act is available from the following organisations.

**Department for Work & Pensions**  
[www.dwp.gov.uk](http://www.dwp.gov.uk)

**Disability Rights Commission**  
[www.drc-gb.org](http://www.drc-gb.org)

**Direct Gov**  
[www.direct.gov.uk](http://www.direct.gov.uk)

**CREDITS**  
H&R Johnson  
01782 757 575  
[www.johnson-tiles.com](http://www.johnson-tiles.com)

technical helpline  
0870 122 8822

LANTAC  
approved certificate.



Armitage  
Shanks



Armitage Shanks,  
Armitage,  
Rugeley,  
Staffordshire  
WS15 4BT

Tel 01543 490253  
Fax 01543 491677  
[www.thebluebook.co.uk](http://www.thebluebook.co.uk)  
P995 05/06



*Armitage  
Shanks*