

# office solutions... what works and why

an informative guide to:  
office washroom requirements

*Armitage  
Shanks*



Armitage  
Shanks



JADO

Ideal Standard has a simple business philosophy; commission leading industrial designers to develop state of the art washroom solutions, then invest in technology and traditional skills to manufacture award-winning products.

Armitage Shanks, since 1999 a sister company of Ideal Standard, has been producing sanitaryware of exceptional quality since 1817.

Together, these businesses offer the most comprehensive collection of office washroom products available today.

Both businesses are dedicated to innovation, from Ideal Standard's ceramic disc tap technology to Armitage Shanks waterless urinal, a commitment to product development and sustainable design are a shared passion. Their combined range, especially when joined with Jado brassware and Trevi showers, creates a 'one stop shop' for the specifier.

Part of the Essential Specifiers Series, a collection that will make the process of selecting the right product much simpler, this guide provides the information needed to ensure you meet the needs of your client and current legislation.

As market leaders Armitage Shanks and Ideal Standard believe they have a responsibility to help define the modern office washroom. For over 190 years they have literally set the standard.



# your questions answered...

# the definitive guide to office requirements

# where, who, when, what...

How important are staff toilets? Obviously every business would agree that they are fundamental to the smooth running of their company, but would they see them as an opportunity to invest in the business and contribute to its revenue?

Increasingly they are.

Many forward thinking businesses, concerned with helping their staff perform at optimum levels thereby maximising productivity and profitability, have realised that their washrooms make a significant statement about the company's and managements attitude towards the people who work for it.

Since the Hawthorn Experiments of the 1930's sociologists have known that staff will be more committed and productive if they feel they are being paid attention to. Creating a comfortable, stylish, clean, easy to maintain and economical to run washroom is one of the strongest positive messages a business can send to its staff.

Businesses must also consider the other washroom facilities they provide; executive and visitor. The visitors' toilet will influence their opinion of an organisation dramatically, these 'hidden' areas communicate the standard the company sets for itself and its respect for clients and suppliers.

Whilst the 'key to the executive washroom' is a somewhat outdated notion, washrooms for senior staff provide an opportunity to create an environment where different considerations guide the design and choice of product.

While different organisations and users will require different approaches, the fundamental specification factors are common to all; fitness for purpose, water economy, return on investment, equal access for all, easy cleaning and the effective use of space. This guide will address these factors and reference the applicable standards necessary to create a modern office washroom.

## Contents

### Information

- Scale of provision (02)
- Water efficiency (36)
- Water technology (37)
- Enhanced capital allowance (37)
- Water saving (37)
- BREEAM (37)
- The washroom environment (38)
- Hygiene (38)
- Durability & maintenance (39)
- Product overview (40)
- Guarantee (44)

### Product offering

- City (04)
- Style (10)
- Style – shower room (14)
- Edge (16)
- Sleek (22)
- Chic (26)
- Chic – space efficient (30)
- Part M (32)



**Q: what are the scale of provision requirements for staff toilets in an office building?**

**A: BS6465 section 6.4, recommends the following minimum provision for staff facilities in offices...**

a primary consideration when designing any washroom facility is the number of people who will use it. BS 6465-1: 2006 contains detailed information on this issue, broadly defined as 'scale of provision'. the data is summarised in the following tables.

the objective of the BSi is to ensure that toilet facilities are quickly accessible, accommodate the needs of all users and do not necessitate queuing.

in addition to the minimum provision outlined here, specifiers should also consider the impact of non-staff users such as customers or suppliers and either provide separate washrooms or increase staff facilities accordingly.





tables 1 & 2: minimum scale of provision of sanitary appliances for staff toilets in offices, shops, factories and other non-domestic premises used at a place of work.

table #1

facilities for female staff *(and male staff in offices where urinals are not installed in male toilets)		
number of female staff*	number of wcs	number of washbasins
1 to 5	1	1
6 to 15	2	2
16 to 30	3	3
31 to 45	4	4
46 to 60	5	5
61 to 75	6	6
76 to 90	7	7
91 to 100	8	8
above 100	8, plus one for every group, or fraction of a group, of 25 staff	

table #2

facilities for male staff			
number of male staff	number of wcs	number of urinals	number of washbasins
1 to 15	1	1	1
16 to 30	2	1	2
31 to 45	2	2	2
46 to 60	3	2	3
61 to 75	3	3	3
76 to 90	4	3	4
91 to 100	4	4	4
above 100	4, plus 1 for every group, or fraction of a group, of 50 male staff		

Washroom facilities for disabled staff must also be provided, as generally described in Section 7 of BS6465 and the Armitage Shanks 'Part M' Essential Specifiers Series guide.

**IMAGINATIVE WASHROOM  
DESIGN CAN HELP SET THE  
TONE FOR A BUSINESS.**

**IN THEIR SEMINAL 'IN SEARCH  
OF EXCELLENCE' PETERS AND  
WATERMAN ADDRESSED  
'PRODUCTIVITY THROUGH PEOPLE'.  
THEIR RESEARCH DETERMINED  
THAT INVESTMENT IN STAFF  
FACILITIES IS REWARDED BY A  
MORE DEDICATED EMPLOYEE.**



**the facts: the washroom environment**

- Organisations at all levels are now investing in a higher level of washroom specification in order to communicate their value system to their staff.
- A thoughtfully designed office washroom can reduce water usage. Saving water makes good business sense for both environmental and financial reasons.





**CITY**







## the facts: water saving

- The Environment Agency estimates that most office buildings can easily reduce water consumption, and their water bills, by around 50%.

**S205801**

Leadenhall basin

**S911267**

Concealed hangers

Sensorflow 21

wall-mounted 23cm  
tubular spout with  
separate sensor

**A4183AA**

Mains spout

**A4184AA**

Link spout

**S7435AA**

Nuastyle under basin  
thermostatic valve

For complete technical  
information please call  
0870 122 8822



**E621501**  
Jasper Morrison urinal

**E622767**  
75cm trap, siphon  
and seal

**K710667**  
Connecting set  
for urinals

**A4188XJ**  
Sensorflow 21  
urinal flush control

*(products listed above,  
see above left and opposite).*

**K310101**  
Tonic wall-mounted WC

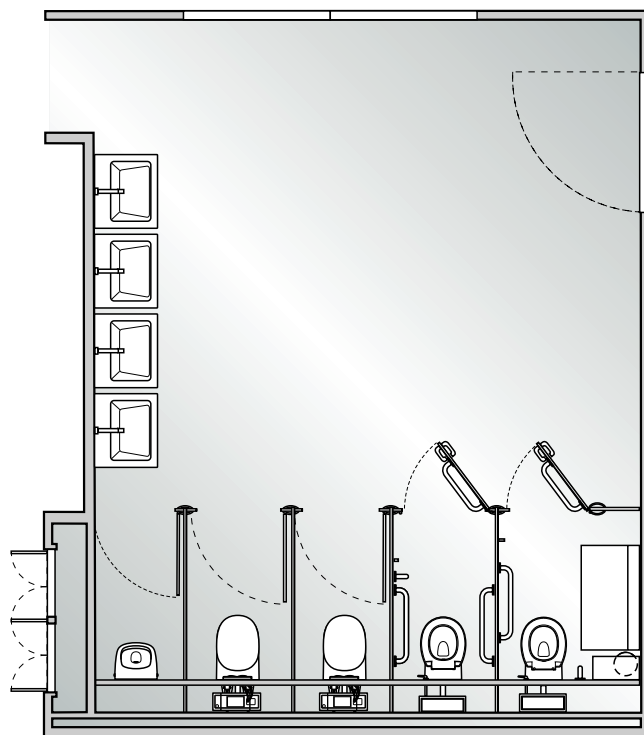
**E006067**  
WC support brackets

**K704701**  
Tonic seat and cover

**A4188XJ**  
Sensorflow 21  
urinal flush control

*(products listed above,  
see above right and opposite).*

For complete technical  
information please call  
0870 122 8822







### **the facts: water saving**

- Tax benefits reward water efficient washrooms. The overflowing basin, the arbitrarily flushing urinal or the high capacity WC cistern are products of the past.



**THE ELEGANT SHAPES AND FORMS FASHIONED BY THE WORLD'S MOST PRESTIGIOUS PRODUCT DESIGNERS HELP TO CREATE AN OFFICE WASHROOM WITH AN ACCOMPLISHED SENSE OF STYLE. THE SEAMLESS INTEGRATION OF FUNCTION AND DECOR ARE THE FOUNDATION OF A WASHROOM THAT STRIVES TO GO BEYOND THE COMMONPLACE.**

E621001  
Jasper Morrison  
50cm vessel basin

E009567  
Vessel basin  
fixing brackets

E6423AA  
Jasper Morrison  
single lever vessel  
basin mixer

E8734AA  
Unslotted waste  
with swivel plug

For complete technical  
information please call  
0870 122 8822



### **the facts: the washroom environment**


- Male toilets are a place of single purpose; to use the loo. Women's needs are more complex. Their washroom must also cater for a broader range of female activities.
- How many people will use an office washroom? BS 6465-1: 2006 contains detailed information on 'Scale of Provision' for a range of building types.





STYLE





E621701  
Jasper Morrison  
wall-mounted WC

E006067  
WC support brackets

E621401  
Soft close seat  
and cover

E6203AA  
Quick release hinges

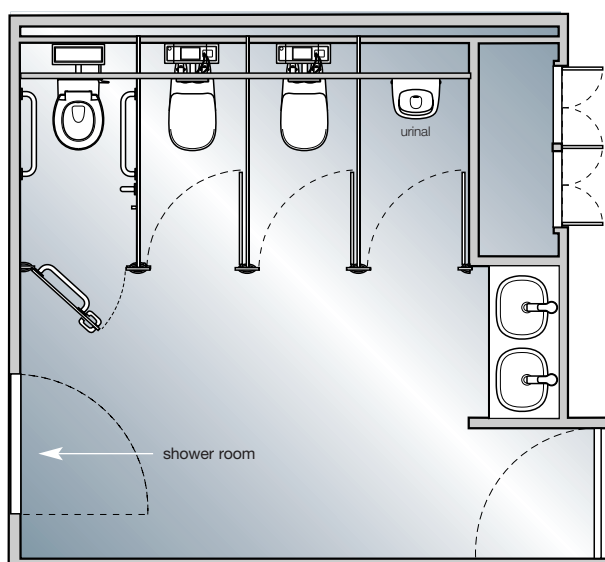
S4399AA  
Contemporary dual  
flushing plate





## the facts: the washroom environment

- Staff will be encouraged to cycle, run or walk to work if welcoming facilities exist for them to freshen up on their arrival at the office. A healthier workforce is more productive.



**E621501**  
Jasper Morrison  
urinal

**E622767**  
75cm trap, siphon  
and seal

**K710667**  
Connecting set  
for urinals

**A4188XJ**  
Sensorflow 21  
urinal flush control  
*(products listed above,  
see above left).*

**E621001**  
Jasper Morrison  
50cm vessel basin

**E009567**  
Vessel basin  
fixing brackets

**E6423AA**  
Jasper Morrison  
single lever vessel  
basin mixer

**E8734AA**  
Unslotted waste  
with swivel plug

**S7435AA**  
Nuastyle under basin  
thermostatic valve

*(products listed above,  
see above right and p11).*

For complete technical  
information please call  
0870 122 8822

## style – shower room



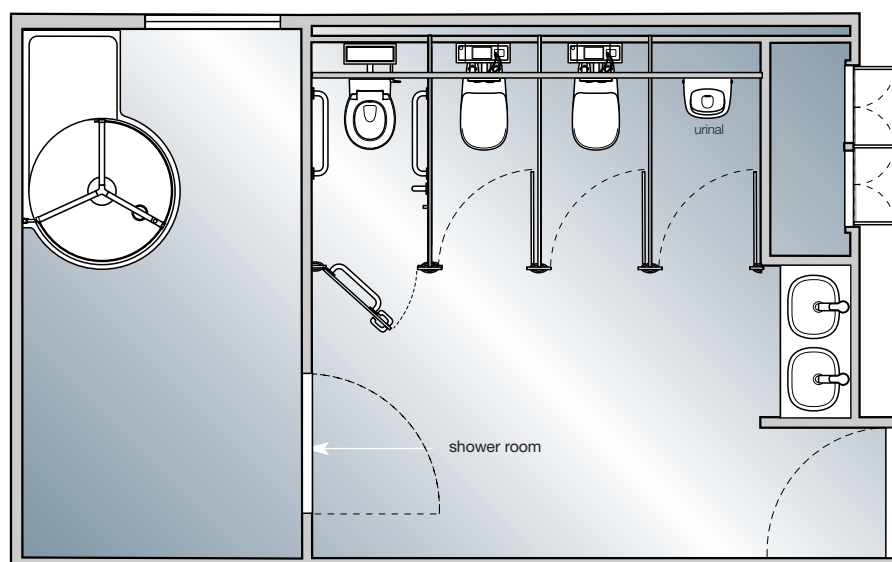
### L8362AA

Serenis 360° corner enclosure with water delivery system, thermostatic valve and 3 function shower head – wet room installation

### L8828AA

Waste and trap

For complete technical information please call 0870 122 8822







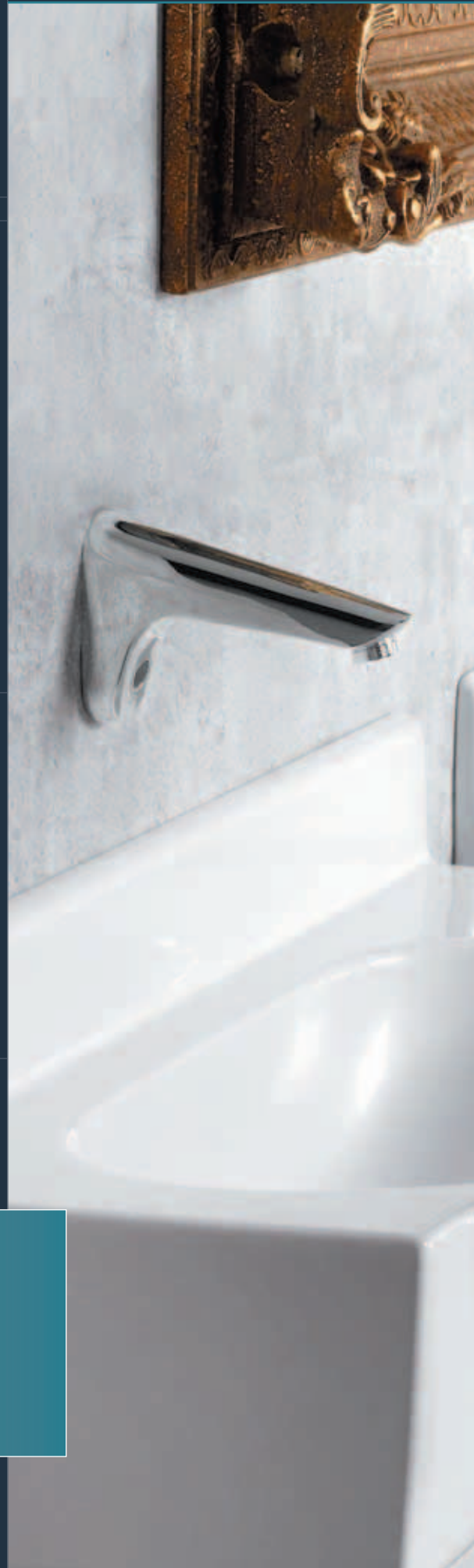
### **the facts: the washroom environment**

- A reinvigorating shower at the end of office hours will ensure senior staff can face their inevitable evening meeting at their best.



**NO LONGER IS THE LUXURY  
WASHROOM THE RESERVE  
OF FT100 COMPANIES.**

**IF SPACE IS EXTENSIVE AND STYLE  
IS AT A PREMIUM YOUR CLIENT  
CAN BENEFIT FROM THE WORK  
OF LEADING PRODUCT DESIGNERS,  
CREATING AN ENVIRONMENT THAT  
PROVIDES AN ATTRACTIVE AND  
COMFORTABLE RESPITE FROM THE  
STRESSES OF THE WORKING DAY.**



#### **the facts: the washroom environment**

- Increasingly male and female hand-washing facilities are being shared. Privacy is maintained in WC areas, whilst communal basins save space and improve throughput.
- Hiding pipe-work in a service duct makes an attractive and easy to maintain washroom. Front-access components, such as concealed cisterns, should be considered if a walk-in duct is not practical.



The new Airside basin meets all the ergonomic challenges of high-end washrooms.

It incorporates an integral shelf for necessities, a bold splash-back to keep the wash area clean and an organic form that maximises hygiene performance.

# EDGE



**S242901**  
Airside basin

**E007067**  
Fixing bolts

**E0079AA**  
Contemporary  
bottle trap

Sensorflow 21  
wall-mounted 15cm  
cast spout

**A4178AA**  
Mains spout

**A4179AA**  
Link spout

**S8720AA**  
Metal slotted  
strainer waste

For complete technical  
information please call  
0870 122 8822



### **the facts: the washroom environment**

- Bold architectural features can be used to create a relaxing and aspirational washroom that enhances the user experience.











## the facts: water saving

- Dual Flush WCs can drastically reduce the water flushed away each day. Some operate on only 4/2.6 litres (full flush/small flush), a water saving of up to 52% versus the 6 litre cistern.

**T094901**  
Imagine 136cm double  
countertop basin

**S8920AA**  
Bottle trap

**S8733AA**  
Slotted waste with  
swivel plug

Sensorflow 21  
countertop spout  
with built in  
electronic sensor

**A4178AA**  
Mains spout

**A4179AA**  
Link spout

**S7435AA**  
Nuastyle under basin  
thermostatic valve

**T1350EG**  
Imagine wall-mounted  
vanity unit

*(products listed  
above, see left).*

**T315801**  
Imagine wall-mounted  
WC

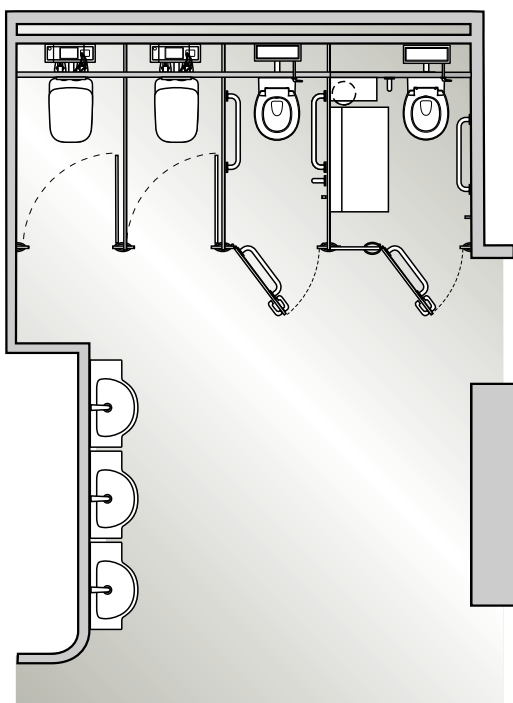
**E006067**  
WC support brackets

**T667401**  
Imagine seat  
and cover

**E4399AA**  
Contemporary dual  
flushing plate

*(products listed  
above, see right).*

For complete technical  
information please call  
0870 122 8822




**CAN AN OFFICE WASHROOM BE MORE THAN A UTILITARIAN SPACE? BY IDENTIFYING THE KEY FACTORS OF AN INDIVIDUAL PROJECT, THE STAFF WASHROOM CAN IMPROVE PRODUCTIVITY AND THE PERCEPTION OF VISITORS. SOUND PRODUCT SPECIFICATION AND SITE MANAGEMENT WILL ALSO SAVE MONEY.**



#### **the facts: the washroom environment**

- A pragmatic design approach is needed. Budget issues can be addressed by careful specification, ensuring that the scheme provides value for money.
- The question of space can be resolved by consideration of factors such as product choice, layout and relationships between sanitary items.



S257001  
Cherwell 42cm  
vanity basin

A4183AA  
Sensorflow 21  
wall-mounted 23cm  
tubular spout with  
separate sensor –  
1 mains spout

# SLEEK



sleek





## the facts: water saving

- Proximity activated sensor taps reduce water use by up to 15% and prevent wastage due to water left running by careless users.

### S257001

Cherwell 42cm  
vanity basin

Sensorflow 21  
wall-mounted 23cm  
tubular spout with  
separate sensor

### A4183AA

Mains spout

### A4184AA

Link spout

### S8722AA

Metal slotted  
strainer waste

### S8920AA

Bottle trap

### S7435AA

Nuastyle under basin  
thermostatic valve

*(products listed above,  
see opposite page).*

### K310101

Tonic wall-mounted  
WC pan

### E006067

WC support brackets

### K704701

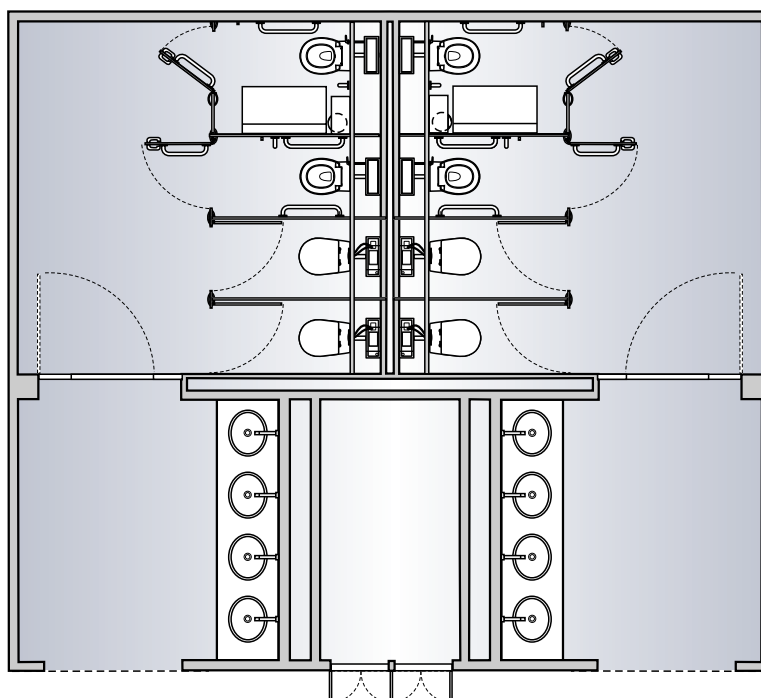
Seat and cover

### S4399AA

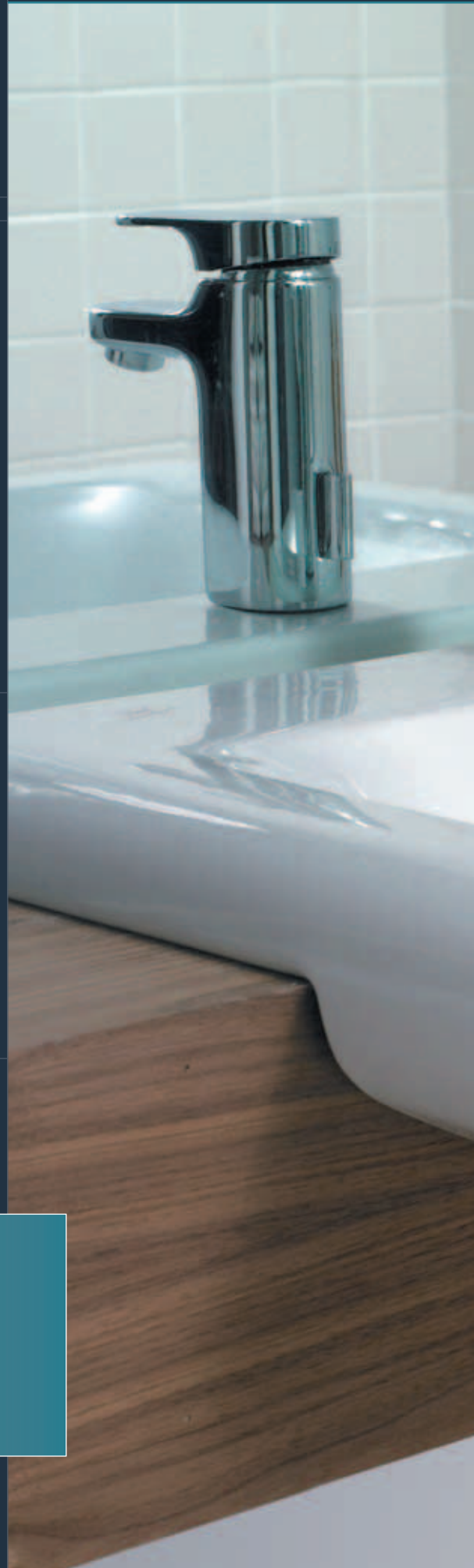
Contemporary dual  
flushing plate

*(products listed  
above, see right).*

For complete technical  
information please call  
0870 122 8822



**THE DEMANDS OF THE 21ST CENTURY OFFICE WASHROOM ARE BROAD. FROM THE STATUS OR PRACTICAL NECESSITY OF A PRIVATE BATHROOM TO THE STRINGENT REQUIREMENTS OF PART M OR THE NEED TO OPTIMISE LIMITED SPACE, EACH CAN BE PERFECTLY TAILORED TO SERVE THE INDIVIDUAL AND THE BUSINESS.**



#### **the facts: the washroom environment**

- The nature of a business will set the overall tone for a washroom. A corporate bank will have aspirations different to those of a manufacturing business.
- The patented IdealFlow hidden overflow is an option on all Moments basins. As the basin fills water also rises within a concealed twin pipe system, if it reaches the overflow level it discharges directly into the waste.



K072001  
Moments 58cm  
semi countertop  
basin

A3903AA  
Moments basin  
mixer

E0079AA  
Contemporary  
bottle trap



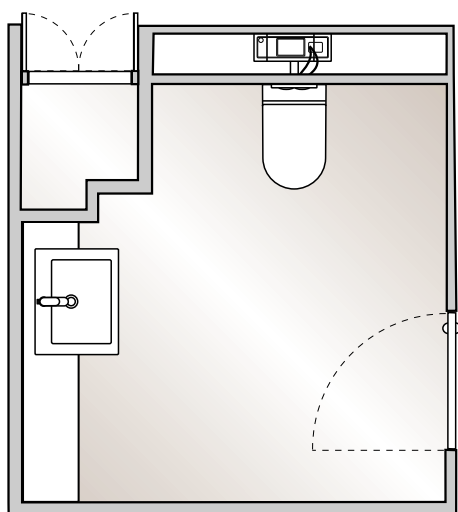
# CHIC





## the facts: water saving

- Exceptional design and functionality co-exist in modern sanitaryware and fittings. Advanced manufacturing methods allow form and function to be fully realised.



**K072001**  
Moments 58cm  
semi countertop basin

**A3903AA**  
Moments basin mixer

**E0079AA**  
Contemporary  
bottle trap

**S7435AA**  
Nuastyle under basin  
thermostatic valve

*(products listed above,  
see opposite page and  
above right).*

**K311301**  
Moments  
wall-mounted WC

**E006067**  
WC support brackets

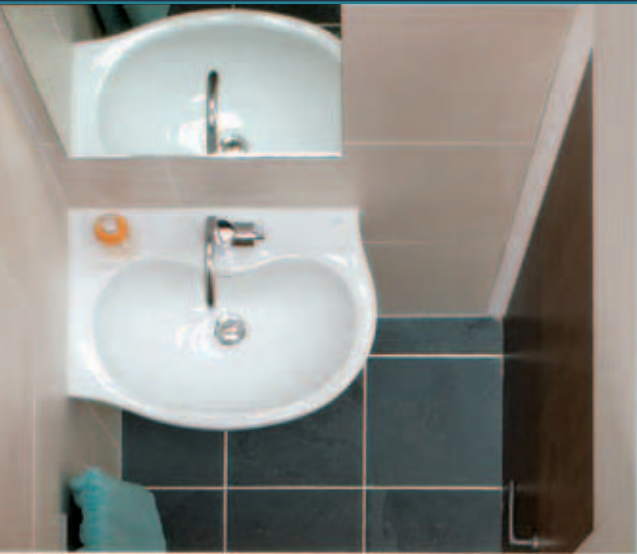
**K705801**  
Moments seat  
and cover

**S4399AA**  
Contemporary dual  
flushing plate

*(products listed above,  
see opposite page and  
above left).*

For complete technical  
information please call  
0870 122 8822

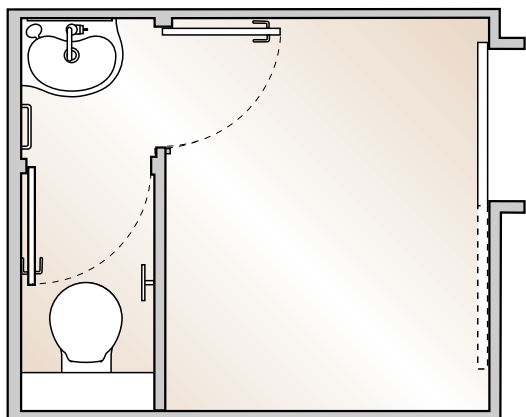






## the facts: the washroom environment

- A lack of space should not mean a lack of style or functionality. A short projection basin and compact WC make even the smallest office toilet an inviting and comfortable space.



### E712201

Space offset corner basin left hand – right hand available

### E750201

Space semi pedestal

### E0067AA

Silver single lever basin mixer

### S7435AA

Nuastyle under basin thermostatic valve

*(products listed above, see opposite page and above right).*

### E717401

Space wall-mounted WC

### E006067

WC support brackets

### E709101

Space seat and cover

### S4399AA

Contemporary dual flushing plate

*(products listed above, see opposite page and above left).*

For complete technical information please call 0870 122 8822



## the facts: part m

- In 2004 the Disability Discrimination Act addressed the issue of building access. Now anyone who is permanently, or temporarily disabled is within the remit of Part M.

# PART M



## contour 21 wall-mounted WC doc m pack



### product codes

#### wall-mounted wc doc m pack

- **S6956AA** White with chrome rails and white seat
- **S6956MY** White with stainless steel rails and grey seat

Wall basin without overflow for additional hygiene

Thermostatic Sequential Mixer. TMV3 approved to prevent scalding

Thermostat is within mixer (not separate as with other suppliers). This cuts down risk of legionella bacteria forming between separate thermostat and mixer

Easy operation handle

Wall-mounted WC designed for easy wheelchair access

Luxury back support

Push button flushing control

Toilet-roll holder.

Stylish concealed fixing grab rails finished in chrome or stainless steel

Lightweight luxury aluminium hinged support arm

LANTAC approved

## contour 21 doc m shower pack



### product codes

#### doc m shower pack

- **S6960AC** White with white rails
- **S6960LI** White with blue rails
- **S6960MY** White with stainless steel rails

Accessible shower and changing area for wheelchair and care assisted use

Easily adjusted diverter for fixed or moveable shower head

Friction hand set for easy up and down movement on rail

Lever operated thermostatic valve to deliver safe, stable hot water at a set temperature

Hinged seat and back support

Concealed fixing grab rails tested to 200kg

Hinged support arm tested to 200kg.

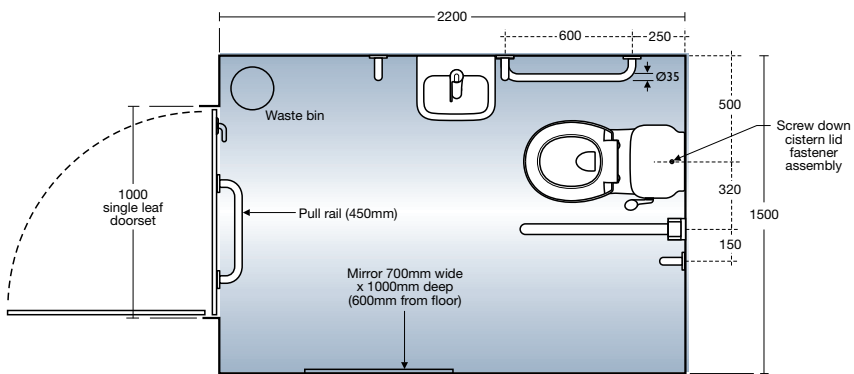
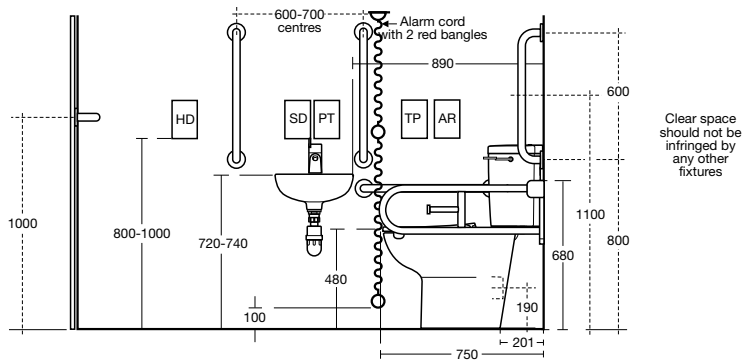
Available with white, blue or stainless steel rails

### OPTION

Also available with corner WC and basin, see Blue Book for further details

## contour 21 close coupled WC doc m pack

For complete technical  
information please call  
**0870 122 8822**



pack product codes

close coupled wc doc m pack

■ S6955AC

White with white  
rails and white seat

■ S6955LI

White with blue rails and seat

## ■ S6955MY

White with stainless steel  
rails and grey seat

Wall basin without overflow  
for additional hygiene

Thermostatic Sequential Mixer. TMV3 approved to prevent scalding

Thermostat is within mixer (not separate as with other suppliers). This cuts down risk of legionella bacteria forming between separate thermostat and mixer

Easy operation handle.

Raised height WC set at 480mm for wheelchair height access

Cistern lid is screwed down to cistern for improved safety

Spatula lever on cistern  
for easy flushing with hand  
or elbow

## Toilet-roll holder

Concealed fixing grab rails  
tested to 200kg weight

Hinged support arm tested to 200kg

Available with white  
or blue rails and seat  
or with stainless steel  
rails and grey seat

LANTAC approved



### the facts: part m

- Simply adding a cubicle suitable for wheelchair access is not enough. Colour and texture ensure visually impaired users can navigate the toilet.





the objective of each essential specifiers series guide is to simplify the process of matching product to project. the next few pages review some of the key issues to be considered in office washroom design.

- achieving water efficiency
- the water technology list
- enhanced capital allowance
- water saving
- BREEAM
- the washroom environment
- hygiene
- durability & maintenance

## 1. achieving water efficiency ✓

Armitage Shanks has developed water saving products that will help to maximise water efficiency. Let us help you select the products that will achieve the optimal BREEAM and COSH ratings for your project.

Water efficient product

### taps & mixers

Almost 33% of all the water used in office buildings comes out of washroom taps and mixers. By specifying a tap with a flow limiter, the Environment Agency has measured an 80% reduction in this figure. Alternatively electronic sensor taps, or timed shut-off push taps, may be used

to reduce consumption by 15% and prevent wastage due to taps left running by careless users. Why use a manual mixer's full flow rate? A special cartridge allows the lever to be 'clicked' from off to 50% flow and then to 100% if required.

### WCs

A water efficient WC can reduce the volume flushed each day by over 50%. The office washroom is particularly suitable for dual flush WCs as it is an easily controlled environment with repeat users. 6/4 litre dual flush WCs are now common, however an additional 34% water saving is possible by using a 4/2.6 litre water saving dual flush cistern. By adding delayed-fill operation, where the cistern only begins

to fill once all the water has emptied out, a further saving of up to 0.5 litre per flush is possible. Correct usage and maintenance are important to realise the water saving benefits of this technology. For visitor areas a single flush 4.5ltr cistern should be considered. This removes any confusion about which flush button to press and so stops the infrequent user wasting water by 'double flushing'.

### urinals

Urinals typically account for 20% of water usage in offices. Each urinal in an uncontrolled washroom will use 900 litres of water per day. Current Water Supply (Fittings) regulations 1999 call for a flush control device to be used that stops urinals flushing when the washroom has not

been used for a set time. Waterless urinals do not use water to flush. A replaceable cartridge prevents odour and normal cleaning keeps the bowl clean, and it has the potential to save at least 80,000 litres of water per urinal per year.



## 2. the water technology list ✓

In March 2001 the Chancellor announced support for organisations that invest in environmentally friendly technologies. Key to this new policy was the introduction of the Water Technology List (WTL) of water efficient products. The Water Technology List was published in 2003 following lengthy consultation

between the Department for Environment, Food and Rural Affairs (DEFRA) and HM Revenue & Customs. Available on the web ([www.eca-water.gov.uk](http://www.eca-water.gov.uk)) and updated monthly, the WTL describes both the products and practices that DEFRA believe will make a positive impact on water saving within any organisation.

**WTL products could reduce water usage by 50% per annum.**

## 3. enhanced capital allowance ✓

The Enhanced Capital Allowance (ECA) scheme works in conjunction with the Water Technology List. Any commercial operation that pays UK corporation tax can claim 100% first year capital allowances on investments in water efficient products (and installation) chosen from the WTL.

Organisations that are run as a Trust and undertake fundraising trading activities may be able to gain tax relief on any profits made. Similarly, any organisation that is run as a charity is liable for corporation tax and may also receive tax relief on any profitable activity.

**The ECA provides 100% tax relief in the first year.**



## 4. water saving ✓

The Environment Agency estimates that most office buildings can easily reduce water consumption, and their water bills, by around 50%. Consider the humble urinal. Increasing the ratio of urinals to WCs in male toilets will immediately save water. Even so, urinals still account for 20% of water usage in offices.

Fitting a flush control device that stops them auto-flushing when the washroom has not been used for a prescribed period, or when the office is unoccupied, can reduce the volume of water used by 74%. Better yet, recent developments in waterless urinal technology can reduce water usage to virtually zero.

**Correct usage and maintenance are important to realise the water saving benefits of technology.**

## 5. breeam ✓

The Building Research Establishment promotes an Environmental Assessment Method (BREEAM) as way to judge the environmental friendliness of buildings. It 'sets the standard for best practice in sustainable development' and measures a buildings level of achievement. Within the BREEAM program a section devoted to offices clearly outlines the steps necessary to achieve compliance and the highest points

ranking. The benefits of creating and using a BREEAM building extend to both designer and client. The client receives a building that supports its environmental strategy and is economic to run, while the designer can clearly demonstrate compliance with environmental requirements and has the satisfaction of working to a formalised best practice.

**Over 65,000 buildings in the UK have already achieved BREEAM certification.**



## 6. the washroom environment ✓

The use of space is crucial to the success of an office washroom. Both large and small facilities have their own challenges.

Surfaces can be used to create an illusion of space in smaller washrooms. Bright and simple wall colours will bounce ambient light around the room to give the illusion of space. Floor finishes are equally critical and any pattern should be chosen to ensure it does not make the room feel smaller. In the case of floor tiles, the larger the better for a small room.

In larger washrooms it is important that the designer incorporates a sensible pattern of user flow so that the facilities can be used efficiently. The creation of awkward traffic patterns within the room may easily lead to capacity being exceeded.



## 7. hygiene ✓

Cleanliness and hygiene are the primary concern of washroom users. There are several points that must be considered when designing hygiene into the washroom.

We adopt rituals to deal with many aspects of life. In the washroom we have personal rituals aimed at avoiding physical contact with surfaces. The challenge is to produce a design that reduces contact with items in the washroom.

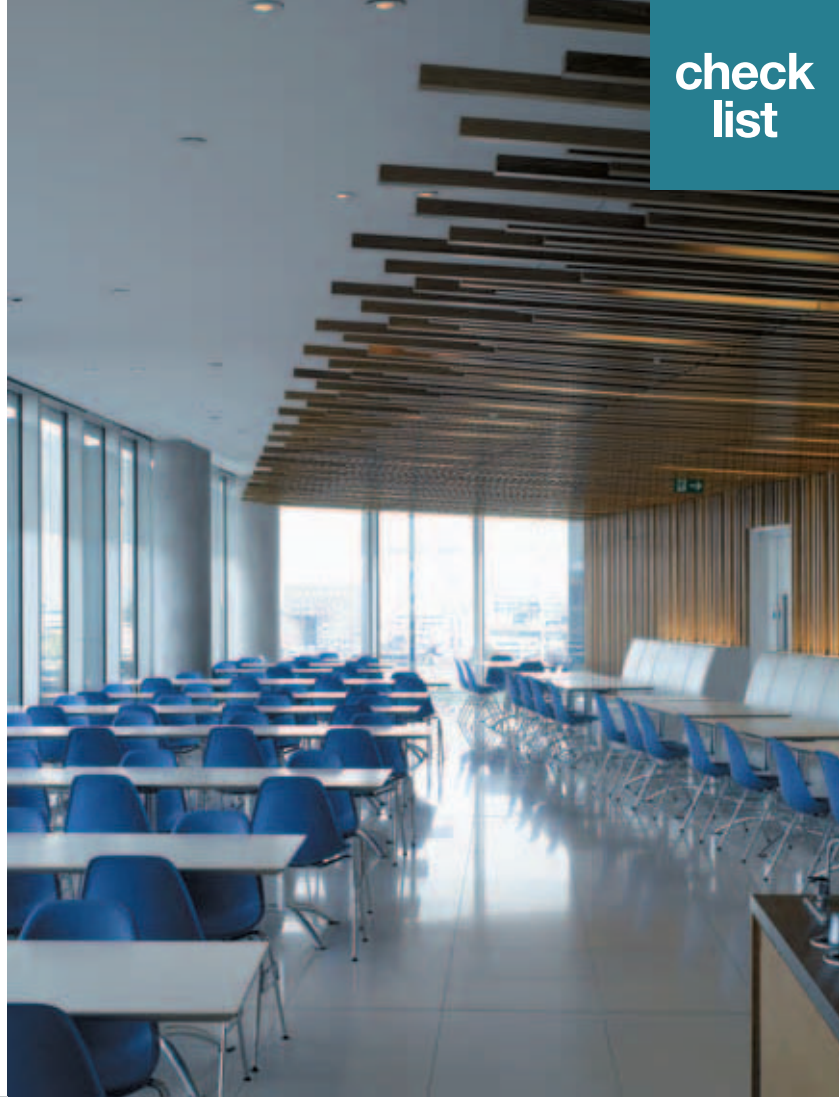
Product selection is crucial. Remote operated 'no-touch' taps such as Sensorflow are triggered by proximity sensors and completely eliminate the need to touch a handle or lever. After washing their hands people want to avoid touch-contamination and will try to push open doors with elbows, use tissue paper to grip the door handle or wait for another user to open the door! A one-way, door-less washroom that eliminates the use of hands after washing is the ultimate objective.



Busy washrooms are perceived as 'dirty'. People maybe obliged to use the last cubicle/urinal that 'no one else wants'. This last WC or urinal is often perceived as below standard, or unclean. Using scale of provision data will ensure overcrowding does not occur.

### Flushing a WC with the lid 'up' allows atomised bacteria to become airborne.

All our senses are used to judge hygiene; aroma, lighting, texture and colour all play a part in our assessment. The designer must therefore produce a scheme that does not just rely on a cleaning regime for its hygiene performance. It must feel clean too.



## 8. durability & maintenance ✓

Vitreous china is the logical sanitaryware choice for the office washroom. It can be cast into attractive shapes, is easy to clean and will withstand constant use.

### Cleaning and maintenance costs have a significant impact on life costs.

A smoothly contoured product, such as a wall-mounted WC, is much easier, faster and economic to clean effectively. The free floor space under the suspended WC bowl makes floor washing much simpler as there are no awkward spaces for a mop to reach. This is an area in which thorough cleaning is critical.

Ease of maintenance can also be built in to the specification. The cable actuated pop-up basin waste, for example, has a durable alloy cable that does not work loose and never requires adjustment, it won't go missing and it will always work.

# product overview

From the smallest organisation to the largest blue chip company, from the staff washroom to the executive bathroom, Armitage Shanks provides a choice of products to satisfy the needs of any client. With almost 200 years of market leading experience, would you expect anything less?



**city**  
**this imaginative washroom design helps set the tone for business**  
pages: 04-09

## specification

S208201 Leadenhall basin	E621501 Jasper Morrison urinal
S911267 Concealed hangers	E622767 75cm trap, siphon and seal
Sensorflow 21 wall-mounted 23cm tubular spout with separate sensor	K710667 Connecting set for urinals
A4183AA Mains spout	A4188XJ Sensorflow 21 urinal flush control
A4184AA Link spout	K310101 Tonic wall-mounted WC
S7435AA Nuastyle under basin thermostatic valve	E006067 WC support brackets
	K704701 Tonic seat and cover





## style

elegant shapes and forms create an office washroom with accomplished sense of style

pages: 10-13



## style

### shower room

a seamless integration of function and decor strives to go beyond the commonplace

pages: 14-15



## edge

a luxury washroom providing an attractive and comfortable respite

pages: 16-21

## specification

### E621001

Jasper Morrison  
50cm vessel basin

### E009567

Vessel basin fixing brackets

### E6423AA

Jasper Morrison single  
lever vessel basin mixer

### E8734AA

Unslotted waste with  
swivel plug

### E621701

Jasper Morrison  
wall-mounted WC

### E006067

WC support brackets

### E621401

Soft close seat and cover

### E6203AA

Quick release hinges

### S4399AA

Contemporary dual  
flushing plate

### E621501

Jasper Morrison urinal

### E622767

75cm trap, siphon and seal

### K710667

Connecting set for urinals

### A4188XJ

Sensorflow 21  
urinal flush control

### S7435AA

Nuastyle under basin  
thermostatic valve

### L8362AA

Serenis 360° corner enclosure  
with water delivery system,  
thermostatic valve and  
3 function shower head –  
wet room installation

### L8828AA

Waste and trap

### S242901

Airside basin

### E007067

Fixing bolts

### E0079AA

Contemporary bottle trap

Sensorflow 21 wall-mounted  
15cm cast spout

### A4178AA

Mains spout

### A4179AA

Link spout

### S8720AA

Metal slotted strainer waste

### T315801

Imagine wall-mounted WC

### E006067

WC support brackets

### T667401

Imagine seat and cover

### E4399AA

Contemporary dual  
flushing plate

### T094901

Imagine 136cm double  
countertop basin

### S8920AA

Bottle trap

### S8733AA

Slotted waste with  
swivel plug

Sensorflow 21 countertop  
spout with built in  
electronic sensor

### A4178AA

Mains spout

### A4179AA

Link spout

### S7435AA

Nuastyle under basin  
thermostatic valve

### T1350EG

Imagine wall-mounted  
vanity unit





**sleek**  
**an individual staff washroom**  
 pages: 22-25



**chic**  
**a private office bathroom perfectly tailored for the individual**  
 pages: 26-29



**chic space efficient**  
**a private office bathroom optimising limited space**  
 pages: 30-31

**specification**

<p><b>S257001</b> Cherwell 42cm vanity basin</p> <p>Sensorflow 21 wall-mounted 23cm tubular spout with separate sensor</p> <p><b>A4183AA</b> Mains spout</p> <p><b>A4184AA</b> Link spout</p> <p><b>S8722AA</b> Metal slotted strainer waste</p> <p><b>S8920AA</b> Bottle trap</p> <p><b>S7435AA</b> Nuastyle under basin thermostatic valve</p>	<p><b>K310101</b> Tonic wall-mounted WC pan</p> <p><b>E006067</b> WC support brackets</p> <p><b>K704701</b> Seat and cover</p> <p><b>S4399AA</b> Contemporary dual flushing plate</p>
<p><b>K072001</b> Moments 58cm semi countertop basin</p> <p><b>A3903AA</b> Moments basin mixer</p> <p><b>E0079AA</b> Contemporary bottle trap</p> <p><b>S7435AA</b> Nuastyle under basin thermostatic valve</p>	<p><b>K311301</b> Moments wall-mounted WC</p> <p><b>E006067</b> WC support brackets</p> <p><b>K705801</b> Moments seat and cover</p> <p><b>S4399AA</b> Contemporary dual flushing plate</p>
<p><b>E712201</b> Space offset corner basin left hand – right hand available</p> <p><b>E750201</b> Space semi pedestal</p> <p><b>E0067AA</b> Silver single lever basin mixer</p> <p><b>S7435AA</b> Nuastyle under basin thermostatic valve</p>	<p><b>E717401</b> Space wall-mounted WC</p> <p><b>E006067</b> WC support brackets</p> <p><b>E709101</b> Space seat and cover</p> <p><b>S4399AA</b> Contemporary dual flushing plate</p>



**contour 21  
wall-mounted  
wc doc m pack**

with clean lines  
and contemporary  
styling, this pack  
combines practical  
features with an  
elegant style

page: 33



**contour 21 doc m  
shower pack**

with its  
thermostatic  
shower and  
option fixed or  
movable shower  
head, this design  
sets the standard  
for practical  
and flexible  
shower options

page: 33



**contour 21  
close coupled  
wc doc m pack**

good design and  
practical elements  
come together in  
this stylish yet easy  
to use model

pages: 34-35

## specification

### wall-mounted wc doc m pack:

- ☐ **S6956AA**  
White with chrome rails  
and white seat
- ☐ **S6956MY**  
White with stainless  
steel rails and grey seat

Wall basin without overflow for  
additional hygiene

Thermostatic Sequential  
Mixer. TMV3 approved to  
prevent scalding

Thermostat is within mixer (not  
separate as with other suppliers).  
This cuts down risk of legionella  
bacteria forming between  
separate thermostat and mixer

Easy operation handle

Wall-mounted WC designed for  
easy wheelchair access

Luxury back support

Push button flushing control

Toilet-roll holder

Stylish concealed fixing grab  
rails finished in chrome or  
stainless steel.  
Lightweight luxury aluminium  
hinged support arm

LANTAC approved

### doc m shower pack:

- ☐ **S6960AC**  
White with white rails
- ☐ **S6960LI**  
White with blue rails
- ☐ **S6960MY**  
White with stainless  
steel rails

Accessible shower and changing  
area for wheelchair and care  
assisted use

Easily adjusted diverter  
for fixed or moveable  
shower head

Friction hand set for easy up  
and down movement on rail

Lever operated thermostatic  
valve to deliver safe, stable hot  
water at a set temperature.

Hinged seat and back support

Concealed fixing grab rails  
tested to 200kg

Hinged support arm  
tested to 200kg

Available with white, blue  
or stainless steel rails

### OPTION

Also available with corner WC  
and basin, see Blue Book for  
further details

### close-coupled wc doc m pack:

- ☐ **S6955AC**  
White with white rails  
and white seat
- ☐ **S6955LI**  
White with blue rails  
and seat
- ☐ **S6955MY**  
White with stainless steel  
rails and grey seat

Wall basin without overflow  
for additional hygiene

Thermostatic Sequential  
Mixer. TMV3 approved to  
prevent scalding

Thermostat is within mixer  
(not separate as with other  
suppliers). This cuts down risk  
of legionella bacteria forming  
between separate  
thermostat and mixer

Easy operation handle

Raised height WC set at  
480mm for wheelchair  
height access

Cistern lid is screwed down  
to cistern for improved safety

Spatula lever on cistern for easy  
flushing with hand or elbow

Toilet-roll holder

Concealed fixing grab rails  
tested to 200kg weight

Hinged support arm tested  
to 200kg

Available with white or blue rails  
and seat or with stainless steel  
rails and grey seat

LANTAC approved

## guarantee

### lifetime

all ceramic products

---

### 5 years

on taps and mixers, toilet seats  
and cistern fittings

---

Our confidence in the quality and reliability of our product allows us to offer outstanding extended guarantees on all our products – where the product fails within 5/25 years/lifetime we offer a free replacement or replacement part (or nearest equivalent). So when your washroom has been satisfactorily installed and is working well, please ensure you register your guarantee.

This guarantee is transferable – it applies to the product not the purchaser provided the guarantee registration is passed on to the new owner.

Liability is limited to individual products and the guarantee does not cover the consequential loss or damage or installation costs. This guarantee does not affect your statutory rights. Products must be installed, used and cared for in line with our fixing instructions and local water regulations, and room must be adequately ventilated.

Parts (eg flushvalves) are guaranteed for five years and will be replaced if found to be faulty. The guarantee does not cover general wear and tear.

Applies to UK and Republic of Ireland only.

You can register for guarantees on a bathroom bought on your behalf by a plumber or builder.

Colours printed in this book are as near as possible to the manufactured range of Armitage Shanks and Ideal Standard quality bathrooms. For accurate comparisons of colours, see actual ware on display at Armitage Shanks and Ideal Standard retailers. Our policy is one of continuous improvement and we reserve the right to change specification and design at any time without notice.

All measurements are in millimetres and are approximate. Products can be subject to tolerances due to manufacturing processes.

#### Additional Resources

Further information about the Disability Discrimination Act is available from the following organisations.

Department for Work & Pensions  
[www.dwp.gov.uk](http://www.dwp.gov.uk)

---

Disability Rights Commission  
[www.drc-gb.org](http://www.drc-gb.org)

---

Direct Gov  
[www.direct.gov.uk](http://www.direct.gov.uk)

---

---

**technical helpline**  
**0870 122 8822**

---

*Armitage  
Shanks*



## CREDITS

p8 – 9

Floor tiles EGZ4240 450 x 450mm  
Wall tiles TM6353 Stack 22 x 72mm

p10 – 12

Floor tiles EA6550STR 600 x 600mm

p15

Floor tiles RO9202 300 x 300mm  
Wall tiles EGZ4290 300 x 300mm

p16 – 17

Wall tiles EGZ4245POL 450 x 450mm

p18 – 19

Floor tiles BL5715 300x600mm  
Wall tiles BL5715TOUCH 150 x 600mm

Bulb Chandelier Atelier Abigail Ahern,  
137 Upper St, Islington, London N1 1QP  
020 7354 8181, [www.AtelierAbigailAhern.com](http://www.AtelierAbigailAhern.com)

p21

Floor tiles EGC7010 600 x 600mm

p28 – 29

Floor tiles EGB4265 120 x 600mm  
Skirting EGB4264 120 x 600mm  
Wall tiles RO9201 100 x 100mm

p30

Floor tiles BL5715 300 x 300mm

p33

Floor tiles BAVPN00R10B 50 x 50mm  
Wall tiles (lower) BAVPN11 200 x 200mm  
Wall tiles (band) MA7901 15 x 47mm  
Wall tiles (upper) BAVPN10 200 x 200mm

p35

Floor tiles EA6562STR 300 x 300mm  
Wall tiles OM8802 25 x 25mm



All tiles supplied by

Grestec Tiles Limited  
Unit 7  
Wheelbarrow Park Estate  
Pattenden Lane  
Marden  
Kent  
TN12 9QJ

T: 0845 130 2241  
F: 0845 130 2242  
E: [mail@grestec.co.uk](mailto:mail@grestec.co.uk)  
W: [www.grestec.co.uk](http://www.grestec.co.uk)



[www.reef-design.co.uk](http://www.reef-design.co.uk)

For further information  
on any of our products;

please call  
**0870 122 8822**

or visit  
[www.thebluebook.co.uk](http://www.thebluebook.co.uk)



The bluebook has long been the most comprehensive guide to bathroom and washroom products. Now the bluebook DVD provides an interactive version allowing you to navigate through more than 1250 pages of detailed drawings and specifications instantly. Once installed on your hard drive, blue book can be automatically updated with the latest product information every time you go online.

A division of Ideal Standard (UK) Ltd.

© Armitage Shanks  
P1289 04/09



Armitage Shanks  
Armitage  
Rugeley  
Staffordshire  
WS15 4BT

Tel 01543 490253  
Fax 01543 491677

Ideal Standard (UK) Ltd  
The Bathroom Works  
National Avenue  
Kingston Upon Hull  
HU5 4HS

Tel 01482 346461  
Fax 01482 445886

[www.thebluebook.co.uk](http://www.thebluebook.co.uk)

*Armitage  
Shanks*

## the essential specifiers series

---

If you would like to request the  
Hospital, Brassware, School or  
Part M brochures from our  
'Essential Specifiers Series',  
**call 0800 590311**

